

Datasheet for ABIN955473
anti-UPP2 antibody (C-Term)

2 Images

[Go to Product page](#)

Overview

Quantity:	0.4 mL
Target:	UPP2
Binding Specificity:	AA 217-244, C-Term
Reactivity:	Human, Mouse
Host:	Rabbit
Clonality:	Polyclonal
Conjugate:	This UPP2 antibody is un-conjugated
Application:	Western Blotting (WB), Immunohistochemistry (Paraffin-embedded Sections) (IHC (p)), Enzyme Immunoassay (EIA)

Product Details

Immunogen:	KLH conjugated synthetic peptide between 217-244 amino acids from the C-terminal region of human UPP2
Isotype:	Ig Fraction
Specificity:	This antibody detects Uridine phosphorylase 2 (UPP2) (C-term).
Cross-Reactivity (Details):	Species reactivity (tested): Human, mouse
Purification:	Protein A column followed by peptide affinity purification

Target Details

Target:	UPP2
---------	------

Target Details

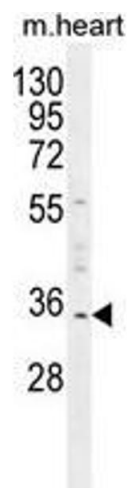
Abstract:	UPP2 Products
Background:	Catalyzes the reversible phosphorylytic cleavage of uridine and deoxyuridine to uracil and ribose-or deoxyribose-1-phosphate. The produced molecules are then utilized as carbon and energy sources or in the rescue of pyrimidine bases for nucleotide synthesis. Shows substrate specificity and accept uridine, deoxyuridine, and thymidine as well as the two pyrimidine nucleoside analogs 5-fluorouridine and 5-fluoro-2(*)-deoxyuridine as substrates.Synonyms: UPase 2, UrdPase 2
Gene ID:	151531
NCBI Accession:	NP_001128570
Pathways:	Ribonucleoside Biosynthetic Process

Application Details

Application Notes:	Optimal working dilution should be determined by the investigator.
Restrictions:	For Research Use only

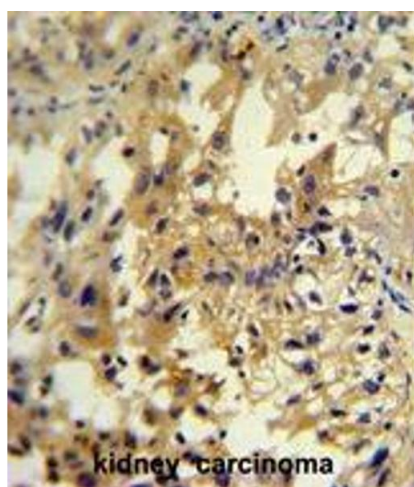
Handling

Format:	Liquid
Concentration:	0.25 mg/mL
Buffer:	PBS with 0.09 % (W/V) sodium azide
Preservative:	Sodium azide
Precaution of Use:	This product contains sodium azide: a POISONOUS AND HAZARDOUS SUBSTANCE which should be handled by trained staff only.
Handling Advice:	Avoid repeated freezing and thawing.
Storage:	4 °C/-20 °C
Storage Comment:	Store at 2 - 8 °C for up to six months or (in aliquots) at -20 °C for longer.



Western Blotting

Image 1. UPP2 Antibody (C-term) western blot analysis in mouse heart tissue lysates (35 µg/lane). This demonstrates the UPP2 antibody detected the UPP2 protein (arrow).



Immunohistochemistry (Paraffin-embedded Sections)

Image 2. UPP2 antibody (C-term) immunohistochemistry analysis in formalin fixed and paraffin embedded human kidney carcinoma followed by peroxidase conjugation of the secondary antibody and DAB staining. This data demonstrates the use of the UPP2 antibody (C-term) for immunohistochemistry. Clinical relevance has not been evaluated.