

Datasheet for ABIN955484
anti-USF1 antibody (Middle Region)[Go to Product page](#)

3 Images

Overview

Quantity:	0.4 mL
Target:	USF1
Binding Specificity:	AA 174-201, Middle Region
Reactivity:	Human, Mouse
Host:	Rabbit
Clonality:	Polyclonal
Conjugate:	This USF1 antibody is un-conjugated
Application:	Western Blotting (WB), Immunofluorescence (IF), Flow Cytometry (FACS), Enzyme Immunoassay (EIA)

Product Details

Immunogen:	KLH conjugated synthetic peptide between 174-201 amino acids from the Central region of human USF1
Isotype:	Ig Fraction
Specificity:	This antibody detects USF1 (Center).
Cross-Reactivity (Details):	Species reactivity (tested): Human, mouse
Purification:	Protein A column followed by peptide affinity purification

Target Details

Target:	USF1
---------	------

Target Details

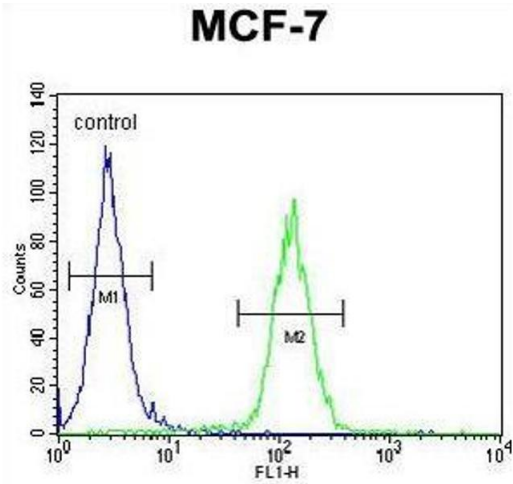
Alternative Name:	USF1 (USF1 Products)
Background:	This gene encodes a member of the basic helix-loop-helix leucine zipper family, and can function as a cellular transcription factor. The encoded protein can activate transcription through pyrimidine-rich initiator (Inr) elements and E-box motifs. This gene has been linked to familial combined hyperlipidemia (FCHL). Two transcript variants encoding distinct isoforms have been identified for this gene.Synonyms: Major late transcription factor 1, USF, Upstream stimulatory factor 1
Gene ID:	7391
NCBI Accession:	NP_009053
Pathways:	Carbohydrate Homeostasis

Application Details

Application Notes:	Optimal working dilution should be determined by the investigator.
Restrictions:	For Research Use only

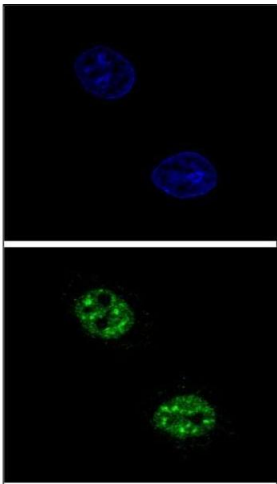
Handling

Format:	Liquid
Concentration:	0.25 mg/mL
Buffer:	PBS with 0.09 % (W/V) sodium azide
Preservative:	Sodium azide
Precaution of Use:	This product contains sodium azide: a POISONOUS AND HAZARDOUS SUBSTANCE which should be handled by trained staff only.
Handling Advice:	Avoid repeated freezing and thawing.
Storage:	4 °C/-20 °C
Storage Comment:	Store at 2 - 8 °C for up to six months or (in aliquots) at -20 °C for longer.



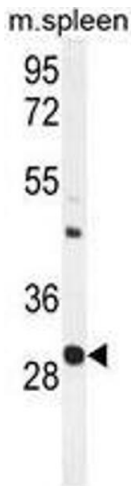
Flow Cytometry

Image 1. USF1 Antibody (Center) flow cytometric analysis of MCF-7 cells (right histogram) compared to a negative control cell (left histogram). FITC-conjugated goat-anti-rabbit secondary antibodies were used for the analysis.



Immunofluorescence

Image 2. Confocal immunofluorescent analysis of USF1 Antibody (Center) with Hela cell followed by Alexa Fluor 488-conjugated goat anti-rabbit IgG (green). DAPI was used to stain the cell nuclear (blue).



Western Blotting

Image 3. USF1 Antibody (Center) western blot analysis in mouse spleen tissue lysates (35 μ g/lane). This demonstrates the USF1 antibody detected the USF1 protein (arrow).