

Datasheet for ABIN955514  
**anti-VILL antibody (Middle Region)**

## 3 Images

[Go to Product page](#)

## Overview

Quantity:	0.4 mL
Target:	VILL
Binding Specificity:	AA 392-420, Middle Region
Reactivity:	Human
Host:	Rabbit
Clonality:	Polyclonal
Application:	Western Blotting (WB), Immunofluorescence (IF), Immunohistochemistry (Paraffin-embedded Sections) (IHC (p)), Enzyme Immunoassay (EIA)

## Product Details

Immunogen:	KLH conjugated synthetic peptide between 392-420 amino acids from the Central region of human VILL
Isotype:	Ig Fraction
Specificity:	This antibody detects VILL (Center).
Cross-Reactivity (Details):	Species reactivity (tested):Human
Purification:	Protein A column followed by peptide affinity purification

## Target Details

Target:	VILL
Alternative Name:	VILL ( <a href="#">VILL Products</a> )

## Target Details

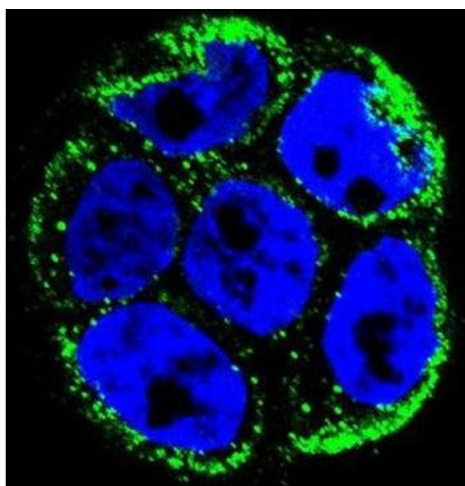
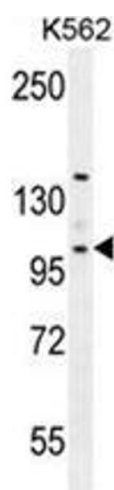
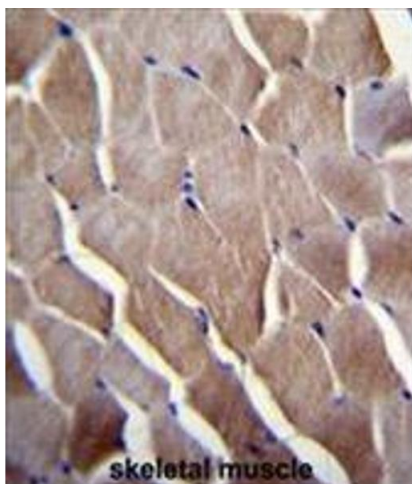
Background:	The protein encoded by this gene belongs to the villin/gelsolin family. It contains 6 gelsolin-like repeats and a headpiece domain. It may play a role in actin-bundling. [provided by RefSeq].Synonyms: Villin-like protein
Gene ID:	50853
NCBI Accession:	<a href="#">NP_056957</a>
Pathways:	<a href="#">Regulation of Actin Filament Polymerization</a>

## Application Details

Application Notes:	Optimal working dilution should be determined by the investigator.
Restrictions:	For Research Use only

## Handling

Format:	Liquid
Concentration:	0.25 mg/mL
Buffer:	PBS with 0.09 % (W/V) sodium azide
Preservative:	Sodium azide
Precaution of Use:	This product contains sodium azide: a POISONOUS AND HAZARDOUS SUBSTANCE which should be handled by trained staff only.
Handling Advice:	Avoid repeated freezing and thawing.
Storage:	4 °C/-20 °C
Storage Comment:	Store at 2 - 8 °C for up to six months or (in aliquots) at -20 °C for longer.



### Immunohistochemistry (Paraffin-embedded Sections)

**Image 1.** VILL Antibody (Center) immunohistochemistry analysis in formalin fixed and paraffin embedded human skeletal muscle followed by peroxidase conjugation of the secondary antibody and DAB staining. This data demonstrates the use of VILL Antibody (Center) for immunohistochemistry. Clinical relevance has not been evaluated.

### Western Blotting

**Image 2.** VILL Antibody (Center) western blot analysis in K562 cell line lysates (35 µg/lane). This demonstrates the VILL antibody detected the VILL protein (arrow).

### Immunofluorescence

**Image 3.** Confocal immunofluorescent analysis of VILL Antibody (Center) with WiDr cell followed by Alexa Fluor 488-conjugated goat anti-rabbit IgG (green). DAPI was used to stain the cell nuclear (blue).