



[Go to Product page](#)

Datasheet for ABIN955518

## anti-VSNL1 antibody (Middle Region)

### 3 Images

#### Overview

Quantity:	0.4 mL
Target:	VSNL1
Binding Specificity:	AA 46-75, Middle Region
Reactivity:	Human, Mouse
Host:	Rabbit
Clonality:	Polyclonal
Conjugate:	This VSNL1 antibody is un-conjugated
Application:	Western Blotting (WB), Immunohistochemistry (Paraffin-embedded Sections) (IHC (p)), Enzyme Immunoassay (EIA)

#### Product Details

Immunogen:	KLH conjugated synthetic peptide between 46-75 amino acids from the Central region of human VSNL1
Isotype:	Ig Fraction
Specificity:	This antibody detects Visinin-like protein 1 / HLP3 (Center).
Cross-Reactivity (Details):	Species reactivity (tested):Human, mouse
Purification:	Protein A column followed by peptide affinity purification

#### Target Details

Target:	VSNL1
---------	-------

## Target Details

---

Alternative Name:	Visinin-Like Protein 1 / HLP3 ( <a href="#">VSNL1 Products</a> )
Background:	<p>This gene is a member of the visinin/recoverin subfamily of neuronal calcium sensor proteins. The encoded protein is strongly expressed in granule cells of the cerebellum where it associates with membranes in a calcium-dependent manner and modulates intracellular signaling pathways of the central nervous system by directly or indirectly regulating the activity of adenylyl cyclase. Alternatively spliced transcript variants have been observed, but their full-length nature has not been determined. Synonyms: Hippocalcin-like protein 3, NVL-1, NVP-1, Neural visinin-like protein 1, VILIP, VISL1, VLP-1, VSNL1</p>
Gene ID:	7447
NCBI Accession:	<a href="#">NP_003376</a>

## Application Details

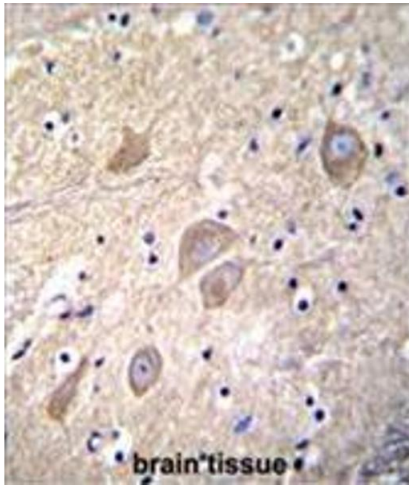
---

Application Notes:	Optimal working dilution should be determined by the investigator.
Restrictions:	For Research Use only

## Handling

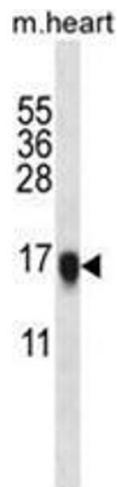
---

Format:	Liquid
Concentration:	0.25 mg/mL
Buffer:	PBS with 0.09 % (W/V) sodium azide
Preservative:	Sodium azide
Precaution of Use:	This product contains sodium azide: a POISONOUS AND HAZARDOUS SUBSTANCE which should be handled by trained staff only.
Handling Advice:	Avoid repeated freezing and thawing.
Storage:	4 °C/-20 °C
Storage Comment:	Store at 2 - 8 °C for up to six months or (in aliquots) at -20 °C for longer.



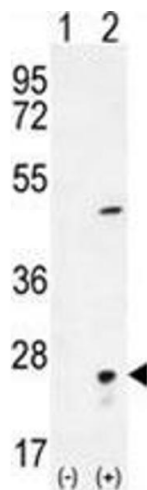
### Immunohistochemistry (Paraffin-embedded Sections)

**Image 1.** VSNL1 Antibody (Center) immunohistochemistry analysis in formalin fixed and paraffin embedded human brain tissue followed by peroxidase conjugation of the secondary antibody and DAB staining. This data demonstrates the use of VSNL1 Antibody (Center) for immunohistochemistry. Clinical relevance has not been evaluated.



### Western Blotting

**Image 2.** VSNL1 Antibody (Center) western blot analysis in mouse heart tissue lysates (35 µg/lane). This demonstrates the VSNL1 antibody detected the VSNL1 protein (arrow).



### Western Blotting

**Image 3.** Western blot analysis of VSNL1 (arrow) using rabbit polyclonal VSNL1 Antibody (Center) . 293 cell lysates (2 µg/lane) either nontransfected (Lane 1) or transiently transfected (Lane 2) with the VSNL1 gene.