

Datasheet for ABIN955521
anti-Vitrin antibody (C-Term)

2 Images

[Go to Product page](#)

Overview

Quantity:	0.4 mL
Target:	Vitrin (VIT)
Binding Specificity:	AA 574-603, C-Term
Reactivity:	Human
Host:	Rabbit
Clonality:	Polyclonal
Conjugate:	This Vitrin antibody is un-conjugated
Application:	Western Blotting (WB), Immunohistochemistry (Paraffin-embedded Sections) (IHC (p)), Enzyme Immunoassay (EIA)

Product Details

Immunogen:	KLH conjugated synthetic peptide between 574-603 amino acids from the C-terminal region of human VITRN
Isotype:	Ig Fraction
Specificity:	This antibody detects Vitrin (VIT) (C-term).
Cross-Reactivity (Details):	Species reactivity (tested):Human
Purification:	Protein A column followed by peptide affinity purification

Target Details

Target:	Vitrin (VIT)
---------	--------------

Target Details

Abstract: [VIT Products](#)

Background: Promotes matrix assembly and cell adhesiveness (By similarity).

Gene ID: 5212

NCBI Accession: [NP_001171440](#)

Application Details

Application Notes: Optimal working dilution should be determined by the investigator.

Restrictions: For Research Use only

Handling

Format: Liquid

Concentration: 0.25 mg/mL

Buffer: PBS with 0.09 % (W/V) sodium azide

Preservative: Sodium azide

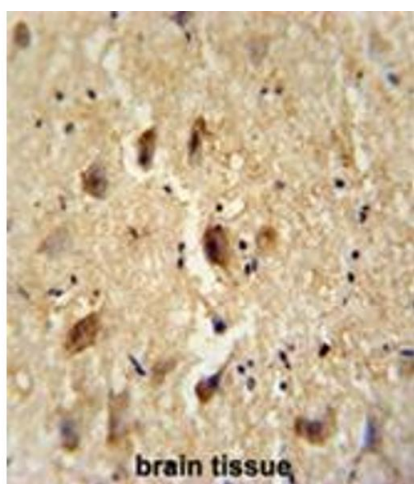
Precaution of Use: This product contains sodium azide: a POISONOUS AND HAZARDOUS SUBSTANCE which should be handled by trained staff only.

Handling Advice: Avoid repeated freezing and thawing.

Storage: 4 °C/-20 °C

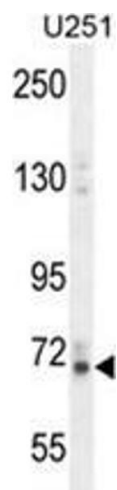
Storage Comment: Store at 2 - 8 °C for up to six months or (in aliquots) at -20 °C for longer.

Images



Immunohistochemistry (Paraffin-embedded Sections)

Image 1. VITRN antibody (C-term) immunohistochemistry analysis in formalin fixed and paraffin embedded human brain tissue followed by peroxidase conjugation of the secondary antibody and DAB staining. This data demonstrates the use of the VITRN antibody (C-term) for immunohistochemistry. Clinical relevance has not been evaluated.



Western Blotting

Image 2. VITRN Antibody (C-term) western blot analysis in U251 cell line lysates (35 µg/lane). This demonstrates the VITRN antibody detected the VITRN protein (arrow).