

Datasheet for ABIN955539
anti-WAC antibody (Middle Region)

2 Images

[Go to Product page](#)

Overview

Quantity:	0.4 mL
Target:	WAC
Binding Specificity:	AA 291-321, Middle Region
Reactivity:	Human
Host:	Rabbit
Clonality:	Polyclonal
Application:	Western Blotting (WB), Flow Cytometry (FACS), Enzyme Immunoassay (EIA)

Product Details

Immunogen:	KLH conjugated synthetic peptide between 291~321 amino acids from the Central region of human WAC
Isotype:	Ig Fraction
Specificity:	This antibody detects WAC (Center).
Cross-Reactivity (Details):	Species reactivity (tested):Human
Purification:	Protein A column followed by peptide affinity purification

Target Details

Target:	WAC
Alternative Name:	WAC (WAC Products)
Background:	WAC contains a WW domain, which is a protein module found in a wide range of signaling

Target Details

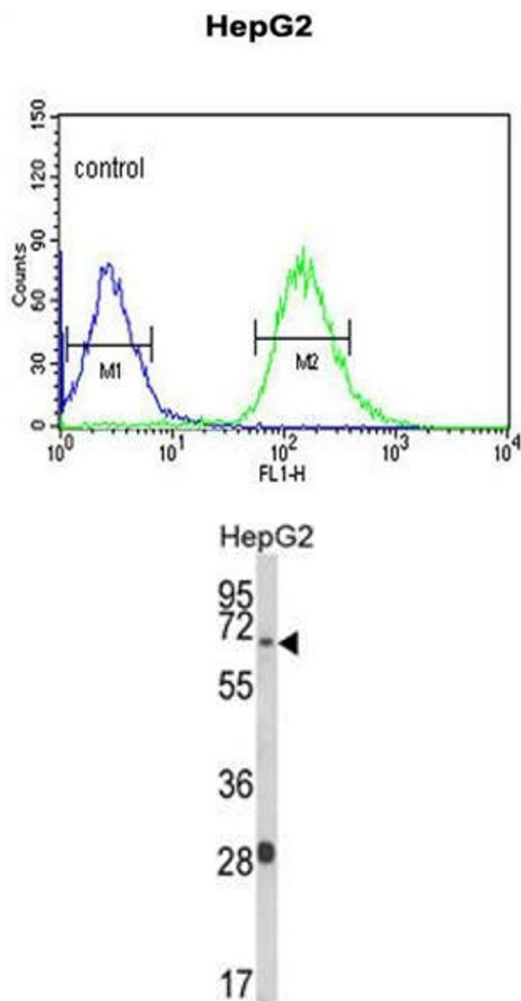
	proteins. This domain mediates protein-protein interactions and binds proteins containing short linear peptide motifs that are proline-rich or contain at least one proline. This gene product shares 94 % sequence identity with the WAC protein in mouse, however, its exact function is not known.Synonyms: KIAA1844, WW domain-containing adapter protein with coiled-coil
Gene ID:	51322
NCBI Accession:	NP_057712
Pathways:	Chromatin Binding

Application Details

Application Notes:	Optimal working dilution should be determined by the investigator.
Restrictions:	For Research Use only

Handling

Format:	Liquid
Concentration:	0.25 mg/mL
Buffer:	PBS with 0.09 % (W/V) sodium azide
Preservative:	Sodium azide
Precaution of Use:	This product contains sodium azide: a POISONOUS AND HAZARDOUS SUBSTANCE which should be handled by trained staff only.
Handling Advice:	Avoid repeated freezing and thawing.
Storage:	4 °C/-20 °C
Storage Comment:	Store at 2 - 8 °C for up to six months or (in aliquots) at -20 °C for longer.



Flow Cytometry

Image 1. WAC Antibody (Center) flow cytometric analysis of HepG2 cells (right histogram) compared to a negative control cell (left histogram). FITC-conjugated goat-anti-rabbit secondary antibodies were used for the analysis.

Western Blotting

Image 2. Western blot analysis of WAC Antibody (Center) in HepG2 cell line lysates (35 µg/lane). WAC (arrow) was detected using the purified Pab.