



Datasheet for ABIN955546  
**anti-DCAF4L2 antibody (N-Term)**



[Go to Product page](#)

2 Images

Overview

Quantity:	0.4 mL
Target:	DCAF4L2
Binding Specificity:	AA 1-30, N-Term
Reactivity:	Human
Host:	Rabbit
Clonality:	Polyclonal
Conjugate:	This DCAF4L2 antibody is un-conjugated
Application:	Western Blotting (WB), Immunohistochemistry (Paraffin-embedded Sections) (IHC (p)), Enzyme Immunoassay (EIA)

Product Details

Immunogen:	KLH conjugated synthetic peptide between 1-30 amino acids from the N-terminal region of human WDR21C
Isotype:	Ig Fraction
Specificity:	This antibody detects WDR21C (N-term).
Cross-Reactivity (Details):	Species reactivity (tested):Human
Purification:	Protein A column followed by peptide affinity purification

Target Details

Target:	DCAF4L2
---------	---------

## Target Details

Alternative Name:	WDR21C ( <a href="#">DCAF4L2 Products</a> )
Background:	Synonyms: WD repeat-containing protein 21C
Gene ID:	138009
NCBI Accession:	<a href="#">NP_689631</a>

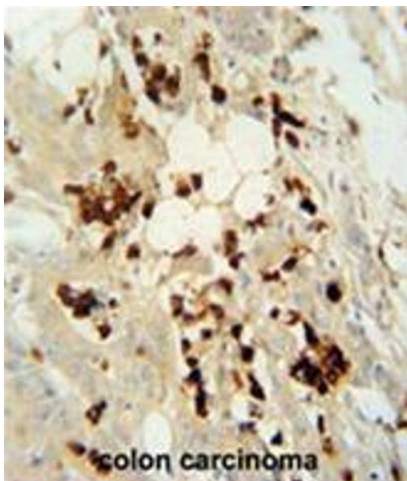
## Application Details

Application Notes:	Optimal working dilution should be determined by the investigator.
Restrictions:	For Research Use only

## Handling

Format:	Liquid
Concentration:	0.25 mg/mL
Buffer:	PBS with 0.09 % (W/V) sodium azide
Preservative:	Sodium azide
Precaution of Use:	This product contains sodium azide: a POISONOUS AND HAZARDOUS SUBSTANCE which should be handled by trained staff only.
Handling Advice:	Avoid repeated freezing and thawing.
Storage:	4 °C/-20 °C
Storage Comment:	Store at 2 - 8 °C for up to six months or (in aliquots) at -20 °C for longer.

## Images



### Immunohistochemistry (Paraffin-embedded Sections)

**Image 1.** WDR21C antibody (N-term) immunohistochemistry analysis in formalin fixed and paraffin embedded human colon carcinoma followed by peroxidase conjugation of the secondary antibody and DAB staining. This data demonstrates the use of the WDR21C antibody (N-term) for immunohistochemistry. Clinical relevance has not been evaluated.



### Western Blotting

**Image 2.** WDR21C Antibody (N-term) western blot analysis in A2058 cell line lysates (35 µg/lane). This demonstrates the WDR21C antibody detected the WDR21C protein (arrow).