



[Go to Product page](#)

Datasheet for ABIN955548
anti-WDR3 antibody (N-Term)

2 Images

Overview

Quantity:	0.4 mL
Target:	WDR3
Binding Specificity:	AA 207-236, N-Term
Reactivity:	Human
Host:	Rabbit
Clonality:	Polyclonal
Application:	Western Blotting (WB), Enzyme Immunoassay (EIA)

Product Details

Immunogen:	KLH conjugated synthetic peptide between 207-236 amino acids from the N-terminal region of human WDR3
Isotype:	Ig Fraction
Specificity:	This antibody detects WDR3 (N-term).
Cross-Reactivity (Details):	Species reactivity (tested):Human
Purification:	Protein A column followed by peptide affinity purification

Target Details

Target:	WDR3
Alternative Name:	WDR3 (WDR3 Products)
Background:	This gene encodes a nuclear protein containing 10 WD repeats. WD repeats are approximately

Target Details

30- to 40-amino acid domains containing several conserved residues, which usually include a trp-asp at the C-terminal end. Proteins belonging to the WD repeat family are involved in a variety of cellular processes, including cell cycle progression, signal transduction, apoptosis, and gene regulation. Synonyms: WD repeat-containing protein 3

Gene ID: 10885

NCBI Accession: [NP_006775](#)

Application Details

Application Notes: Optimal working dilution should be determined by the investigator.

Restrictions: For Research Use only

Handling

Format: Liquid

Concentration: 0.25 mg/mL

Buffer: PBS with 0.09 % (W/V) sodium azide

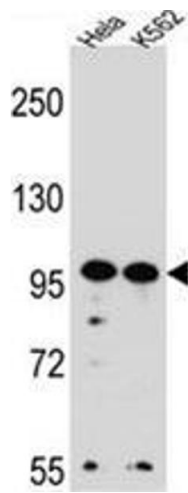
Preservative: Sodium azide

Precaution of Use: This product contains sodium azide: a POISONOUS AND HAZARDOUS SUBSTANCE which should be handled by trained staff only.

Handling Advice: Avoid repeated freezing and thawing.

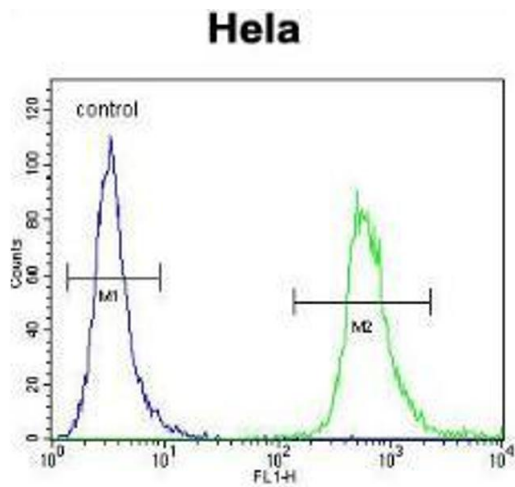
Storage: 4 °C/-20 °C

Storage Comment: Store at 2 - 8 °C for up to six months or (in aliquots) at -20 °C for longer.



Western Blotting

Image 1. WDR3 Antibody (N-term) western blot analysis in HeLa, K562 cell line lysates (35 µg/lane). This demonstrates the WDR3 antibody detected the WDR3 protein (arrow).



Flow Cytometry

Image 2. WDR3 Antibody (N-term) flow cytometric analysis of HeLa cells (right histogram) compared to a negative control cell (left histogram). FITC-conjugated goat-anti-rabbit secondary antibodies were used for the analysis.