



[Go to Product page](#)

Datasheet for ABIN955554

## anti-DCAF8L2 antibody (N-Term)

### 2 Images

#### Overview

Quantity:	0.4 mL
Target:	DCAF8L2
Binding Specificity:	AA 119-148, N-Term
Reactivity:	Human
Host:	Rabbit
Clonality:	Polyclonal
Application:	Western Blotting (WB), Immunohistochemistry (Paraffin-embedded Sections) (IHC (p)), Enzyme Immunoassay (EIA)

#### Product Details

Immunogen:	KLH conjugated synthetic peptide between 119-148 amino acids from the N-terminal region of human WDR42C
Isotype:	Ig Fraction
Cross-Reactivity (Details):	Species reactivity (tested):Human
Purification:	Protein A column followed by peptide affinity purification

#### Target Details

Target:	DCAF8L2
Alternative Name:	WDR42C ( <a href="#">DCAF8L2 Products</a> )
Background:	Synonyms: DCAF8L2, DDB1- and CUL4-associated factor 8-like protein 2

## Target Details

Gene ID: 9606

## Application Details

Application Notes: Optimal working dilution should be determined by the investigator.

Restrictions: For Research Use only

## Handling

Format: Liquid

Concentration: 0.25 mg/mL

Buffer: PBS with 0.09 % (W/V) sodium azide

Preservative: Sodium azide

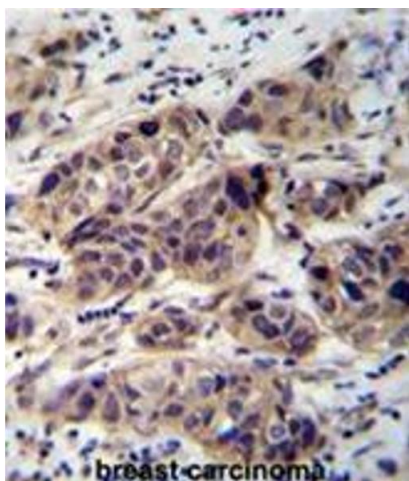
Precaution of Use: This product contains sodium azide: a POISONOUS AND HAZARDOUS SUBSTANCE which should be handled by trained staff only.

Handling Advice: Avoid repeated freezing and thawing.

Storage: 4 °C/-20 °C

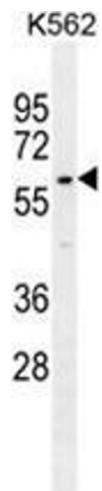
Storage Comment: Store at 2 - 8 °C for up to six months or (in aliquots) at -20 °C for longer.

## Images



### Immunohistochemistry (Paraffin-embedded Sections)

**Image 1.** WDR42C Antibody (N-term) immunohistochemistry analysis in formalin fixed and paraffin embedded human breast carcinoma followed by peroxidase conjugation of the secondary antibody and DAB staining. This data demonstrates the use of WDR42C Antibody (N-term) for immunohistochemistry. Clinical relevance has not been evaluated.



### Western Blotting

**Image 2.** WDR42C Antibody (N-term) western blot analysis in K562 cell line lysates (35 µg/lane). This demonstrates the WDR42C antibody detected the WDR42C protein (arrow).