

Datasheet for ABIN955561
anti-WDR52 antibody (C-Term)[Go to Product page](#)

3 Images

Overview

Quantity:	0.4 mL
Target:	WDR52
Binding Specificity:	AA 775-805, C-Term
Reactivity:	Human
Host:	Rabbit
Clonality:	Polyclonal
Application:	Western Blotting (WB), Immunofluorescence (IF), Immunohistochemistry (Paraffin-embedded Sections) (IHC (p)), Enzyme Immunoassay (EIA)

Product Details

Immunogen:	KLH conjugated synthetic peptide between 775-805 amino acids from the C-terminal region of human WDR52
Isotype:	Ig Fraction
Specificity:	This antibody detects WDR52 (C-term).
Cross-Reactivity (Details):	Species reactivity (tested):Human
Purification:	Protein A column followed by peptide affinity purification

Target Details

Target:	WDR52
Alternative Name:	WDR52 (WDR52 Products)

Target Details

Background: Synonyms: WD repeat-containing protein 52

Gene ID: 55779

NCBI Accession: [NP_001157968](#)

Application Details

Application Notes: Optimal working dilution should be determined by the investigator.

Restrictions: For Research Use only

Handling

Format: Liquid

Concentration: 0.25 mg/mL

Buffer: PBS with 0.09 % (W/V) sodium azide

Preservative: Sodium azide

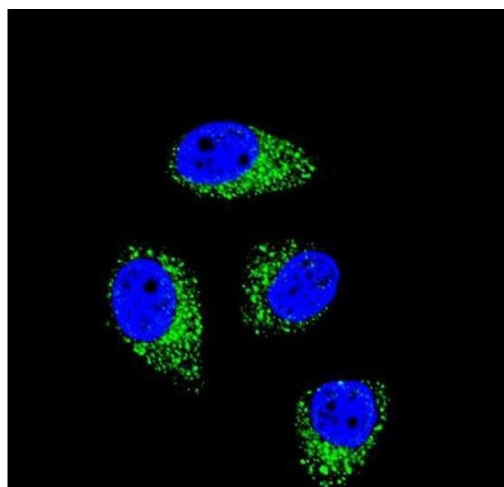
Precaution of Use: This product contains sodium azide: a POISONOUS AND HAZARDOUS SUBSTANCE which should be handled by trained staff only.

Handling Advice: Avoid repeated freezing and thawing.

Storage: 4 °C/-20 °C

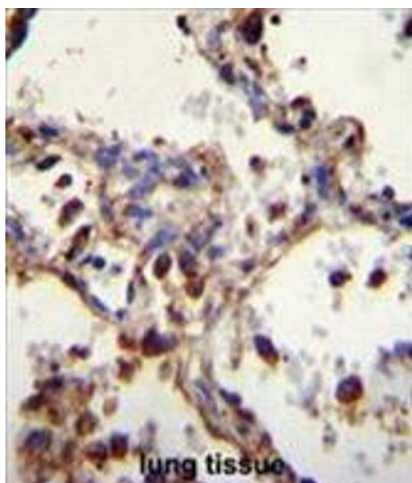
Storage Comment: Store at 2 - 8 °C for up to six months or (in aliquots) at -20 °C for longer.

Images



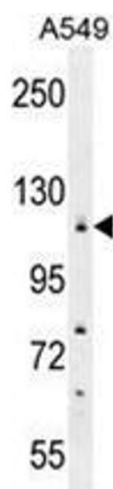
Immunofluorescence

Image 1. Confocal immunofluorescent analysis of WDR52 Antibody (C-term) with A549 cell followed by Alexa Fluor 488-conjugated goat anti-rabbit IgG (green). DAPI was used to stain the cell nuclear (blue).



Immunohistochemistry (Paraffin-embedded Sections)

Image 2. WDR52 Antibody (C-term) immunohistochemistry analysis in formalin fixed and paraffin embedded human lung tissue followed by peroxidase conjugation of the secondary antibody and DAB staining. This data demonstrates the use of WDR52 Antibody (C-term) for immunohistochemistry. Clinical relevance has not been evaluated.



Western Blotting

Image 3. WDR52 Antibody (C-term) western blot analysis in A549 cell line lysates (35 µg/lane). This demonstrates the WDR52 antibody detected the WDR52 protein (arrow).