



[Go to Product page](#)

Datasheet for ABIN955567  
**anti-WDR86 antibody (C-Term)**

2 Images

Overview

Quantity:	0.4 mL
Target:	WDR86
Binding Specificity:	AA 400-429, C-Term
Reactivity:	Human
Host:	Rabbit
Clonality:	Polyclonal
Application:	Western Blotting (WB), Immunohistochemistry (Paraffin-embedded Sections) (IHC (p)), Enzyme Immunoassay (EIA)

Product Details

Immunogen:	KLH conjugated synthetic peptide between 400-429 amino acids from the C-terminal region of human WDR86
Isotype:	Ig Fraction
Specificity:	This antibody detects WDR86 (C-term).
Cross-Reactivity (Details):	Species reactivity (tested):Human
Purification:	Protein A column followed by peptide affinity purification

Target Details

Target:	WDR86
Alternative Name:	WDR86 ( <a href="#">WDR86 Products</a> )

## Target Details

Background: Synonyms: WD repeat-containing protein 86

Gene ID: 349136

NCBI Accession: [NP\\_938026](#)

## Application Details

Application Notes: Optimal working dilution should be determined by the investigator.

Restrictions: For Research Use only

## Handling

Format: Liquid

Concentration: 0.25 mg/mL

Buffer: PBS with 0.09 % (W/V) sodium azide

Preservative: Sodium azide

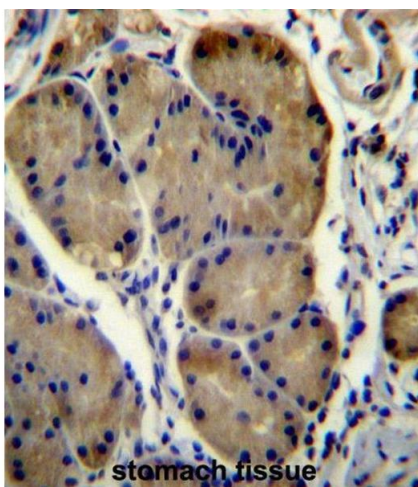
Precaution of Use: This product contains sodium azide: a POISONOUS AND HAZARDOUS SUBSTANCE which should be handled by trained staff only.

Handling Advice: Avoid repeated freezing and thawing.

Storage: 4 °C/-20 °C

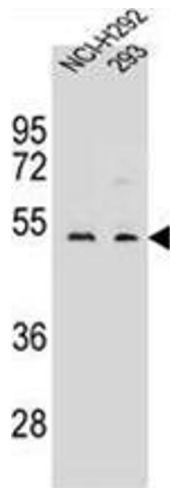
Storage Comment: Store at 2 - 8 °C for up to six months or (in aliquots) at -20 °C for longer.

## Images



### Immunohistochemistry (Paraffin-embedded Sections)

**Image 1.** WDR86 Antibody (C-term) immunohistochemistry analysis in formalin fixed and paraffin embedded human stomach tissue followed by peroxidase conjugation of the secondary antibody and DAB staining. This data demonstrates the use of WDR86 Antibody (C-term) for immunohistochemistry. Clinical relevance has not been evaluated.



### Western Blotting

**Image 2.** WDR86 Antibody (C-term) western blot analysis in NCI-H292,293 cell line lysates (35  $\mu$ g/lane). This demonstrates the WDR86 antibody detected the WDR86 protein (arrow).