



[Go to Product page](#)

Datasheet for ABIN955569

anti-WDR93 antibody (C-Term)

2 Images

Overview

Quantity:	0.4 mL
Target:	WDR93
Binding Specificity:	AA 579-608, C-Term
Reactivity:	Human
Host:	Rabbit
Clonality:	Polyclonal
Application:	Western Blotting (WB), Flow Cytometry (FACS), Enzyme Immunoassay (EIA)

Product Details

Immunogen:	KLH conjugated synthetic peptide between 579-608 amino acids from the C-terminal region of human WDR93
Isotype:	Ig Fraction
Specificity:	This antibody detects WDR93 (C-term).
Cross-Reactivity (Details):	Species reactivity (tested):Human
Purification:	Protein A column followed by peptide affinity purification

Target Details

Target:	WDR93
Alternative Name:	WDR93 (WDR93 Products)
Background:	Synonyms: WD repeat-containing protein 93

Target Details

Gene ID: 56964

NCBI Accession: [NP_064597](#)

Application Details

Application Notes: Optimal working dilution should be determined by the investigator.

Restrictions: For Research Use only

Handling

Format: Liquid

Concentration: 0.25 mg/mL

Buffer: PBS with 0.09 % (W/V) sodium azide

Preservative: Sodium azide

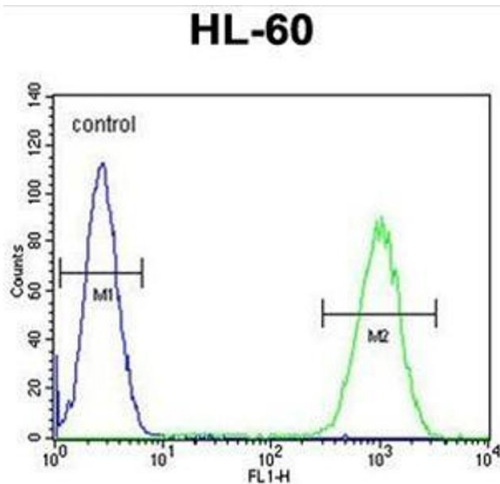
Precaution of Use: This product contains sodium azide: a POISONOUS AND HAZARDOUS SUBSTANCE which should be handled by trained staff only.

Handling Advice: Avoid repeated freezing and thawing.

Storage: 4 °C/-20 °C

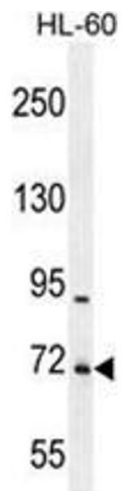
Storage Comment: Store at 2 - 8 °C for up to six months or (in aliquots) at -20 °C for longer.

Images



Flow Cytometry

Image 1. WDR93 Antibody (C-term) flow cytometric analysis of HL-60 cells (right histogram) compared to a negative control cell (left histogram). FITC-conjugated goat-anti-rabbit secondary antibodies were used for the analysis.



Western Blotting

Image 2. WDR93 Antibody (C-term) western blot analysis in HL-60 cell line lysates (35 µg/lane). This demonstrates the WDR93 antibody detected the WDR93 protein (arrow).