



[Go to Product page](#)

Datasheet for ABIN955571

## anti-WFDC1 antibody (C-Term, His163)

### 2 Images

#### Overview

Quantity:	0.4 mL
Target:	WFDC1
Binding Specificity:	AA 147-177, C-Term, His163
Reactivity:	Human
Host:	Rabbit
Clonality:	Polyclonal
Application:	Western Blotting (WB), Immunohistochemistry (Paraffin-embedded Sections) (IHC (p)), Enzyme Immunoassay (EIA)

#### Product Details

Immunogen:	KLH conjugated synthetic peptide between 147-177 (H163)amino acids from the C-terminal region of human WFDC1
Isotype:	Ig Fraction
Specificity:	This antibody detects PS20 (C-term).
Cross-Reactivity (Details):	Species reactivity (tested):Human
Purification:	Protein A column followed by peptide affinity purification

#### Target Details

Target:	WFDC1
Alternative Name:	WFDC1 / PS20 ( <a href="#">WFDC1 Products</a> )

## Target Details

---

**Background:** This gene encodes a member of the WAP-type four disulfide core domain family. The WAP-type four-disulfide core domain, or WAP signature motif, contains eight cysteines forming four disulfide bonds at the core of the protein, and functions as a protease inhibitor in many family members. The encoded protein shares 81 % amino acid identity with the rat ps20 protein, which was originally identified as a secreted growth inhibitor. This gene is mapped to chromosome 16q24, an area of frequent loss of heterozygosity in cancers, including prostate, breast and hepatocellular cancers and Wilms' tumor. Owing to its location and a possible growth inhibitory property of its gene product, this gene is suggested to be a tumor suppressor gene. Synonyms: Prostate stromal protein ps20, WAP four-disulfide core domain protein 1, ps20 growth inhibitor

**Gene ID:** 58189

**NCBI Accession:** [NP\\_067020](#)

## Application Details

---

**Application Notes:** Optimal working dilution should be determined by the investigator.

**Restrictions:** For Research Use only

## Handling

---

**Format:** Liquid

**Concentration:** 0.25 mg/mL

**Buffer:** PBS with 0.09 % (W/V) sodium azide

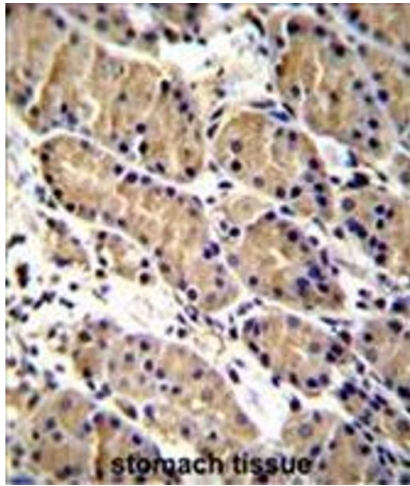
**Preservative:** Sodium azide

**Precaution of Use:** This product contains sodium azide: a POISONOUS AND HAZARDOUS SUBSTANCE which should be handled by trained staff only.

**Handling Advice:** Avoid repeated freezing and thawing.

**Storage:** 4 °C/-20 °C

**Storage Comment:** Store at 2 - 8 °C for up to six months or (in aliquots) at -20 °C for longer.



### Immunohistochemistry (Paraffin-embedded Sections)

**Image 1.** WFDC1 Antibody (C-term H163) immunohistochemistry analysis in formalin fixed and paraffin embedded human stomach tissue followed by peroxidase conjugation of the secondary antibody and DAB staining. This data demonstrates the use of WFDC1 Antibody (C-term H163) for immunohistochemistry. Clinical relevance has not been evaluated.



### Western Blotting

**Image 2.** WFDC1 Antibody (C-term H163) western blot analysis in HeLa cell line lysates (35 µg/lane). This demonstrates the WFDC1 antibody detected the WFDC1 protein (arrow).