

Datasheet for ABIN955575
anti-DFNB31 antibody (Middle Region)[Go to Product page](#)

2 Images

Overview

Quantity:	0.4 mL
Target:	DFNB31
Binding Specificity:	AA 385-413, Middle Region
Reactivity:	Human
Host:	Rabbit
Clonality:	Polyclonal
Application:	Western Blotting (WB), Immunohistochemistry (Paraffin-embedded Sections) (IHC (p)), Enzyme Immunoassay (EIA)

Product Details

Immunogen:	KLH conjugated synthetic peptide between 385-413 amino acids from the Central region of Human Whirlin. Genename: WHRN
Isotype:	Ig Fraction
Specificity:	This antibody recognizes Human Whirlin (Center).
Purification:	Affinity Chromatography on Protein A

Target Details

Target:	DFNB31
Alternative Name:	Whirlin (DFNB31 Products)
Background:	This gene is thought to function in the organization and stabilization of stereocilia elongation and actin cytoskeletal assembly, based on studies of the related mouse gene. Mutations in this

Target Details

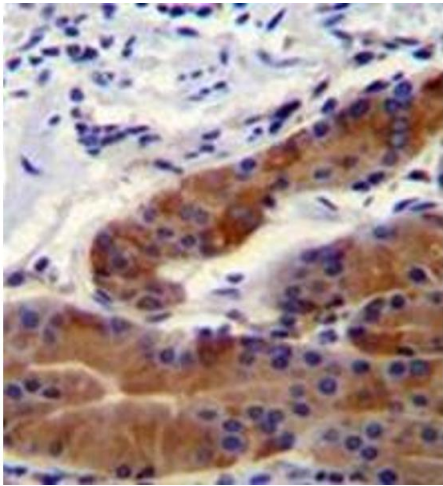
	gene have been associated with autosomal recessive non-syndromic deafness and Usher Syndrome. Alternative splicing of this gene results in multiple transcript variants encoding different isoforms.Synonyms: Autosomal recessive deafness type 31 protein, DFNB31, KIAA1526, WHRN
Molecular Weight:	96586 Da
Gene ID:	25861
NCBI Accession:	NP_001077354
Pathways:	Sensory Perception of Sound

Application Details

Application Notes:	Optimal working dilution should be determined by the investigator.
Restrictions:	For Research Use only

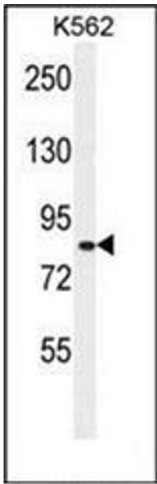
Handling

Format:	Liquid
Concentration:	0.25 mg/mL
Buffer:	PBS, 0.09 % Sodium Azide
Preservative:	Sodium azide
Precaution of Use:	This product contains sodium azide: a POISONOUS AND HAZARDOUS SUBSTANCE which should be handled by trained staff only.
Handling Advice:	Avoid repeated freezing and thawing.
Storage:	4 °C/-20 °C
Storage Comment:	Store undiluted at 2-8 °C for one month or (in aliquots) at -20 °C for longer.



Immunohistochemistry (Paraffin-embedded Sections)

Image 1. Formalin fixed and paraffin embedded stomach tissue reacted with Whirlin Antibody followed by peroxidase conjugation of the secondary antibody and DAB staining.



Western Blotting

Image 2. Western blot analysis of Whirlin Antibody in K562 cell line lysates (35ug/lane).