

Datasheet for ABIN955606
anti-XYLT1 antibody (N-Term)[Go to Product page](#)

1 Image

Overview

Quantity:	0.4 mL
Target:	XYLT1
Binding Specificity:	AA 133-163, N-Term
Reactivity:	Human
Host:	Rabbit
Clonality:	Polyclonal
Conjugate:	This XYLT1 antibody is un-conjugated
Application:	Western Blotting (WB), Enzyme Immunoassay (EIA)

Product Details

Immunogen:	KLH conjugated synthetic peptide between 133-163 amino acids from the N-terminal region of human XYLT1
Isotype:	Ig Fraction
Specificity:	This antibody detects XYLT1 (N-term).
Cross-Reactivity (Details):	Species reactivity (tested):Human
Purification:	Protein A column followed by peptide affinity purification

Target Details

Target:	XYLT1
Alternative Name:	Xylosyltransferase 1 (XYLT1 Products)

Target Details

Background: This locus encodes a xylosyltransferase enzyme. The encoded protein catalyzes transfer of UDP-xylose to serine residues of an acceptor protein substrate. This transfer reaction is necessary for biosynthesis of glycosaminoglycan chains. Mutations in this gene have been associated with increased severity of pseudoxanthoma elasticum. Synonyms: Peptide O-xylosyltransferase 1, XT-I, XT1, XYLT1, XylT-I, Xylosyltransferase I

Gene ID: 64131

NCBI Accession: [NP_071449](#)

Pathways: [Glycosaminoglycan Metabolic Process](#)

Application Details

Application Notes: Optimal working dilution should be determined by the investigator.

Restrictions: For Research Use only

Handling

Format: Liquid

Concentration: 0.25 mg/mL

Buffer: PBS with 0.09 % (W/V) sodium azide

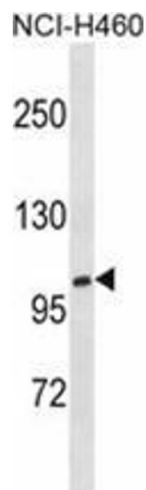
Preservative: Sodium azide

Precaution of Use: This product contains sodium azide: a POISONOUS AND HAZARDOUS SUBSTANCE which should be handled by trained staff only.

Handling Advice: Avoid repeated freezing and thawing.

Storage: 4 °C/-20 °C

Storage Comment: Store at 2 - 8 °C for up to six months or (in aliquots) at -20 °C for longer.



Western Blotting

Image 1. XYLT1 Antibody (N-term) western blot analysis in NCI-H460 cell line lysates (35 µg/lane). This demonstrates the XYLT1 antibody detected the XYLT1 protein (arrow).