



[Go to Product page](#)

Datasheet for ABIN955611  
**anti-YIF1B antibody (N-Term)**

2 Images

Overview

Quantity:	0.4 mL
Target:	YIF1B
Binding Specificity:	AA 81-110, N-Term
Reactivity:	Human
Host:	Rabbit
Clonality:	Polyclonal
Application:	Western Blotting (WB), Immunohistochemistry (Paraffin-embedded Sections) (IHC (p)), Enzyme Immunoassay (EIA)

Product Details

Immunogen:	KLH conjugated synthetic peptide between 81-110 amino acids from the N-terminal region of human YIF1B
Isotype:	Ig Fraction
Specificity:	This antibody detects YIF1B (N-term).
Cross-Reactivity (Details):	Species reactivity (tested):Human
Purification:	Protein A column followed by peptide affinity purification

Target Details

Target:	YIF1B
Alternative Name:	YIF1B ( <a href="#">YIF1B Products</a> )

## Target Details

Background:	YIF1B belongs to the YIF1 family. The functions of YIF1B remain unknown.Synonyms: PP4519, UNQ3073/PRO9905, YIP1-interacting factor homolog B
Gene ID:	90522
NCBI Accession:	<a href="#">NP_001034760</a>

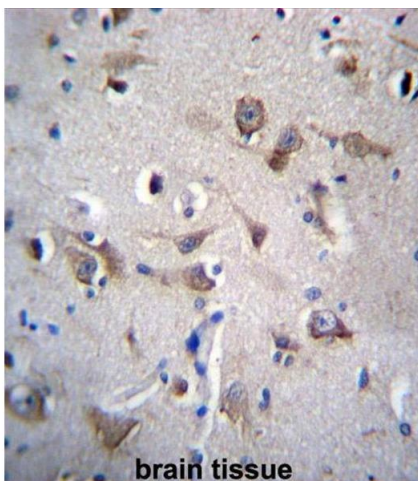
## Application Details

Application Notes:	Optimal working dilution should be determined by the investigator.
Restrictions:	For Research Use only

## Handling

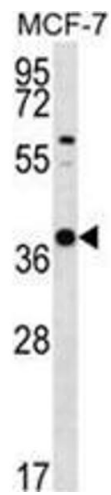
Format:	Liquid
Concentration:	0.25 mg/mL
Buffer:	PBS with 0.09 % (W/V) sodium azide
Preservative:	Sodium azide
Precaution of Use:	This product contains sodium azide: a POISONOUS AND HAZARDOUS SUBSTANCE which should be handled by trained staff only.
Handling Advice:	Avoid repeated freezing and thawing.
Storage:	4 °C/-20 °C
Storage Comment:	Store at 2 - 8 °C for up to six months or (in aliquots) at -20 °C for longer.

## Images



### Immunohistochemistry (Paraffin-embedded Sections)

**Image 1.** YIF1B Antibody (N-term) immunohistochemistry analysis in formalin fixed and paraffin embedded human brain tissue followed by peroxidase conjugation of the secondary antibody and DAB staining. This data demonstrates the use of YIF1B Antibody (N-term) for immunohistochemistry. Clinical relevance has not been evaluated.



### Western Blotting

**Image 2.** YIF1B Antibody (N-term) western blot analysis in MCF-7 cell line lysates (35 µg/lane). This demonstrates the YIF1B antibody detected the YIF1B protein (arrow).