

Datasheet for ABIN955613  
**anti-YIPF5 antibody (N-Term)**[Go to Product page](#)

## 3 Images

## Overview

|                      |  |
|----------------------|--|
| Quantity:            | 0.4 mL   |
| Target:              | YIPF5  |
| Binding Specificity: | AA 28-57, N-Term   |
| Reactivity:          | Human, Mouse   |
| Host:                | Rabbit   |
| Clonality:           | Polyclonal   |
| Conjugate:           | This YIPF5 antibody is un-conjugated   |
| Application:         | Western Blotting (WB), Immunohistochemistry (Paraffin-embedded Sections) (IHC (p)), Enzyme Immunoassay (EIA) |

## Product Details

|                             |  |
|-----------------------------|--|
| Immunogen:                  | KLH conjugated synthetic peptide between 28~57 amino acids from the N-terminal region of human YIPF5 |
| Isotype:                    | Ig Fraction  |
| Specificity:                | This antibody detects YIPF5 (N-term).  |
| Cross-Reactivity (Details): | Species reactivity (tested): Human, mouse  |
| Purification:               | Protein A column followed by peptide affinity purification   |

## Target Details

|         |       |
|---------|-------|
| Target: | YIPF5 |
|---------|-------|

## Target Details

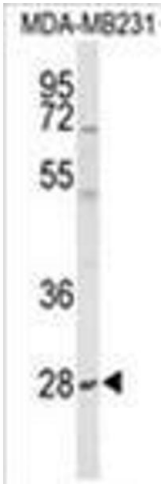
|                   |  |
|-------------------|--|
| Alternative Name: | YIPF5 ( <a href="#">YIPF5 Products</a> )   |
| Background:       | YIPF5 plays a role in transport between endoplasmic reticulum and Golgi.Synonyms: FINGER5, Five-pass transmembrane protein localizing in the Golgi apparatus and the endoplasmic reticulum 5, PP12723, Protein, SB140, SMAP-5, Smooth muscle cell-associated protein 5, UNQ3123/PRO10275, YIP1 family member 5, YIP1A, YPT-interacting protein 1 A |
| Gene ID:          | 81555  |
| NCBI Accession:   | <a href="#">NP_001020118</a>   |

## Application Details

|                    |  |
|--------------------|--|
| Application Notes: | Optimal working dilution should be determined by the investigator. |
| Restrictions:      | For Research Use only  |

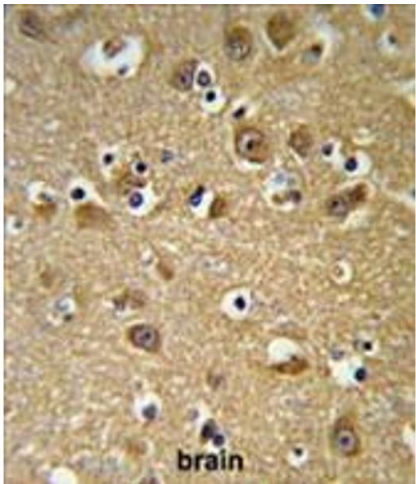
## Handling

|                    |  |
|--------------------|--|
| Format:            | Liquid   |
| Concentration:     | 0.25 mg/mL   |
| Buffer:            | PBS with 0.09 % (W/V) sodium azide   |
| Preservative:      | Sodium azide   |
| Precaution of Use: | This product contains sodium azide: a POISONOUS AND HAZARDOUS SUBSTANCE which should be handled by trained staff only. |
| Handling Advice:   | Avoid repeated freezing and thawing.   |
| Storage:           | 4 °C/-20 °C  |
| Storage Comment:   | Store at 2 - 8 °C for up to six months or (in aliquots) at -20 °C for longer.  |



#### Western Blotting

**Image 1.** Western blot analysis of YIPF5 Antibody (N-term) in MDA-MB231 cell line lysates (35 µg/lane). YIPF5 (arrow) was detected using the purified Pab;



#### Immunohistochemistry (Paraffin-embedded Sections)

**Image 2.** YIPF5 Antibody (N-term) IHC analysis in formalin fixed and paraffin embedded brain tissue followed by peroxidase conjugation of the secondary antibody and DAB staining. This data demonstrates the use of the YIPF5 Antibody (N-term) for immunohistochemistry. Clinical relevance has not been evaluated.



#### Western Blotting

**Image 3.** Western blot analysis of YIPF5 Antibody (N-term) in CHO cell line lysates (35 µg/lane). YIPF5 (arrow) was detected using the purified Pab.