



[Go to Product page](#)

Datasheet for ABIN955617
anti-YPEL5 antibody (C-Term)

2 Images

Overview

Quantity:	0.4 mL
Target:	YPEL5
Binding Specificity:	AA 91-121, C-Term
Reactivity:	Human, Mouse
Host:	Rabbit
Clonality:	Polyclonal
Conjugate:	This YPEL5 antibody is un-conjugated
Application:	Western Blotting (WB), Immunohistochemistry (Paraffin-embedded Sections) (IHC (p)), Enzyme Immunoassay (EIA)

Product Details

Immunogen:	KLH conjugated synthetic peptide between amino acids 91-121 from the C-terminal region of human YPEL5
Isotype:	Ig Fraction
Specificity:	This antibody detects YPEL5 (C-term).
Cross-Reactivity (Details):	Species reactivity (tested):Human, mouse
Purification:	Protein A column followed by peptide affinity purification

Target Details

Target:	YPEL5
---------	-------

Target Details

Alternative Name:	YPEL5 (YPEL5 Products)
Background:	Synonyms: CGI-127, Protein yippee-like 5
Gene ID:	51646
NCBI Accession:	NP_001120871

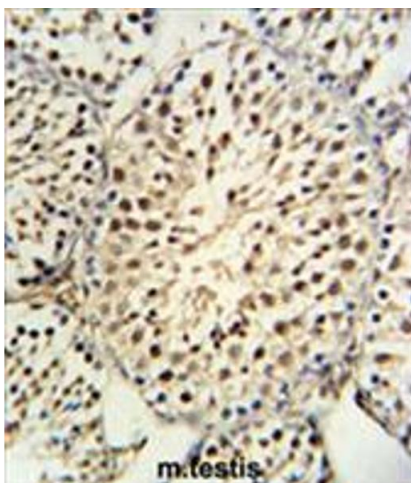
Application Details

Application Notes:	Optimal working dilution should be determined by the investigator.
Restrictions:	For Research Use only

Handling

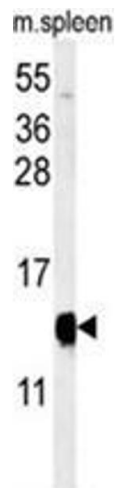
Format:	Liquid
Concentration:	0.25 mg/mL
Buffer:	PBS with 0.09 % (W/V) sodium azide
Preservative:	Sodium azide
Precaution of Use:	This product contains sodium azide: a POISONOUS AND HAZARDOUS SUBSTANCE which should be handled by trained staff only.
Handling Advice:	Avoid repeated freezing and thawing.
Storage:	4 °C/-20 °C
Storage Comment:	Store at 2 - 8 °C for up to six months or (in aliquots) at -20 °C for longer.

Images



Immunohistochemistry (Paraffin-embedded Sections)

Image 1. YPEL5 Antibody (C-term) IHC analysis in formalin fixed and paraffin embedded mouse testis tissue followed by peroxidase conjugation of the secondary antibody and DAB staining. This data demonstrates the use of the YPEL5 Antibody (C-term) for immunohistochemistry. Clinical relevance has not been evaluated.



Western Blotting

Image 2. Western blot analysis of YPEL5 Antibody (C-term) in mouse spleen tissue lysates (35 μ g/lane). YPEL5 (arrow) was detected using the purified Pab.