

Datasheet for ABIN955619

anti-YTHDF2 antibody (C-Term)[Go to Product page](#)**1** Image

Overview

Quantity:	0.4 mL
Target:	YTHDF2
Binding Specificity:	AA 550-579, C-Term
Reactivity:	Human
Host:	Rabbit
Clonality:	Polyclonal
Conjugate:	This YTHDF2 antibody is un-conjugated
Application:	Western Blotting (WB), Enzyme Immunoassay (EIA)

Product Details

Immunogen:	KLH conjugated synthetic peptide between 550-579 amino acids from the C-terminal region of human YTHD2
Isotype:	Ig Fraction
Specificity:	This antibody detects YTHDF2 (C-term).
Cross-Reactivity (Details):	Species reactivity (tested):Human
Purification:	Protein A column followed by peptide affinity purification

Target Details

Target:	YTHDF2
Alternative Name:	YTHDF2 (YTHDF2 Products)

Target Details

Background: YTHDF2 is a member of the YTH (YT521-B homology) superfamily containing YTH domain. The YTH domain is typical for the eukaryotes and is particularly abundant in plants. The YTH domain is usually located in the middle of the protein sequence and may function in binding to RNA. In addition to a YTH domain, this protein has a proline rich region which may be involved in signal transduction. An Alu-rich domain has been identified in one of the introns of this gene, which is thought to be associated with human longevity. In addition, reciprocal translocations between this gene and the Runx1 (AML1) gene on chromosome 21 has been observed in patients with acute myeloid leukemia. This gene was initially mapped to chromosome 14, which was later turned out to be a pseudogene. Synonyms: CLL-associated antigen KW-14, HGRG8, High-glucose-regulated protein 8, KW-14, NY-REN-2, Renal carcinoma antigen NY-REN-2, YTH domain family protein 2

Gene ID: 51441

NCBI Accession: [NP_001166299](#)

Application Details

Application Notes: Optimal working dilution should be determined by the investigator.

Restrictions: For Research Use only

Handling

Format: Liquid

Concentration: 0.25 mg/mL

Buffer: PBS with 0.09 % (W/V) sodium azide

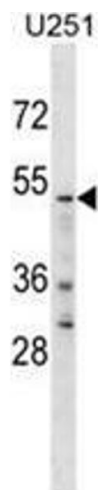
Preservative: Sodium azide

Precaution of Use: This product contains sodium azide: a POISONOUS AND HAZARDOUS SUBSTANCE which should be handled by trained staff only.

Handling Advice: Avoid repeated freezing and thawing.

Storage: 4 °C/-20 °C

Storage Comment: Store at 2 - 8 °C for up to six months or (in aliquots) at -20 °C for longer.



Western Blotting

Image 1. YTHD2 Antibody (C-term) western blot analysis in U251 cell line lysates (35 µg/lane). This demonstrates the YTHD2 antibody detected the YTHD2 protein (arrow).