



[Go to Product page](#)

Datasheet for ABIN955620
anti-YTHDF3 antibody (Middle Region)

2 Images

Overview

Quantity:	200 µL
Target:	YTHDF3
Binding Specificity:	AA 235-265, Middle Region
Reactivity:	Human
Host:	Rabbit
Clonality:	Polyclonal
Application:	Western Blotting (WB), Immunohistochemistry (Paraffin-embedded Sections) (IHC (p)), Enzyme Immunoassay (EIA)

Product Details

Immunogen:	KLH conjugated synthetic peptide between 235~265 amino acids from the Central region of human YTHD3
Isotype:	Ig Fraction
Specificity:	This antibody detects YTHDF3 (Center).
Cross-Reactivity (Details):	Species reactivity (tested):Human
Purification:	Protein A column followed by peptide affinity purification

Target Details

Target:	YTHDF3
Alternative Name:	YTHDF3 (YTHDF3 Products)

Target Details

Background: Synonyms: YTH domain family protein 3

Gene ID: 253943

NCBI Accession: [NP_689971](#)

Application Details

Application Notes: Optimal working dilution should be determined by the investigator.

Restrictions: For Research Use only

Handling

Format: Liquid

Concentration: 0.25 mg/mL

Buffer: PBS with 0.09 % (W/V) sodium azide

Preservative: Sodium azide

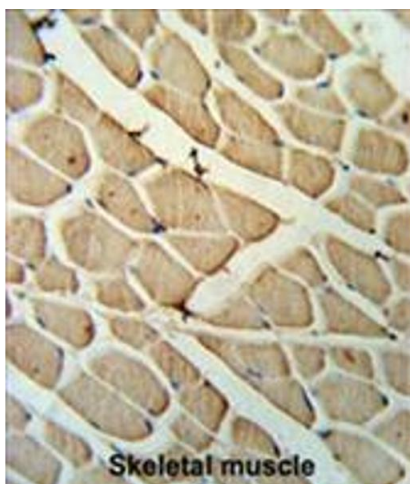
Precaution of Use: This product contains sodium azide: a POISONOUS AND HAZARDOUS SUBSTANCE which should be handled by trained staff only.

Handling Advice: Avoid repeated freezing and thawing.

Storage: 4 °C/-20 °C

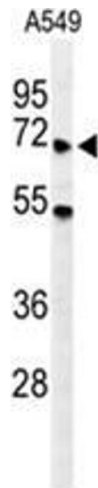
Storage Comment: Store at 2 - 8 °C for up to six months or (in aliquots) at -20 °C for longer.

Images



Immunohistochemistry (Paraffin-embedded Sections)

Image 1. YTHD3 Antibody (Center) IHC analysis in formalin fixed and paraffin embedded skeletal muscle followed by peroxidase conjugation of the secondary antibody and DAB staining. This data demonstrates the use of the YTHD3 Antibody (Center) for immunohistochemistry. Clinical relevance has not been evaluated.



Western Blotting

Image 2. Western blot analysis of YTHD3 Antibody (Center) in A549 cell line lysates (35 µg/lane). YTHD3 (arrow) was detected using the purified Pab.