

Datasheet for ABIN955621  
**anti-PTGR2 antibody (N-Term)**

## 2 Images

[Go to Product page](#)

## Overview

Quantity:	0.4 mL
Target:	PTGR2
Binding Specificity:	AA 72-102, N-Term
Reactivity:	Human
Host:	Rabbit
Clonality:	Polyclonal
Application:	Western Blotting (WB), Immunohistochemistry (Paraffin-embedded Sections) (IHC (p)), Enzyme Immunoassay (EIA)

## Product Details

Immunogen:	KLH conjugated synthetic peptide between 72-102 amino acids from the N-terminal region of Human ZADH1. Genename: PTGR2
Isotype:	Ig Fraction
Specificity:	This antibody recognizes Human ZADH1 (N-term).
Purification:	Affinity Chromatography on Protein A

## Target Details

Target:	PTGR2
Alternative Name:	ZADH1 ( <a href="#">PTGR2 Products</a> )
Background:	This gene encodes an enzyme involved in the metabolism of prostaglandins. The encoded protein catalyzes the NADPH-dependent conversion of 15-keto-prostaglandin E2 to 15-keto-

## Target Details

13,14-dihydro-prostaglandin E2. This protein may also be involved in regulating activation of the peroxisome proliferator-activated receptor. Alternative splicing results in multiple transcript variants. Synonyms: 15-oxoprostaglandin 13-reductase, PRG-2, PTGR2, Prostaglandin-reductase 2, Zinc-binding alcohol dehydrogenase domain-containing protein 1

Molecular Weight: 38499 Da

Gene ID: 145482

NCBI Accession: [NP\\_001139626](#)

## Application Details

Application Notes: Optimal working dilution should be determined by the investigator.

Restrictions: For Research Use only

## Handling

Format: Liquid

Concentration: 0.25 mg/mL

Buffer: PBS containing 0.09 % (W/V) Sodium Azide as preservative

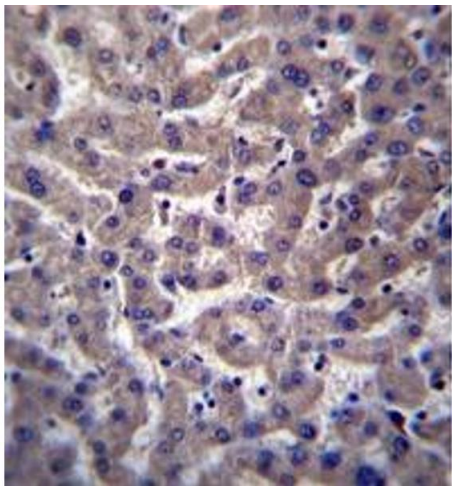
Preservative: Sodium azide

Precaution of Use: This product contains sodium azide: a POISONOUS AND HAZARDOUS SUBSTANCE which should be handled by trained staff only.

Handling Advice: Avoid repeated freezing and thawing.

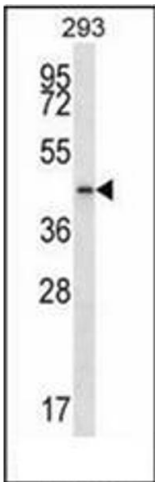
Storage: 4 °C/-20 °C

Storage Comment: Store undiluted at 2-8 °C for one month or (in aliquots) at -20 °C for longer.



**Immunohistochemistry (Paraffin-embedded Sections)**

**Image 1.** Formalin fixed and paraffin embedded human liver tissue reacted with ZADH1 Antibody (N-term) followed by peroxidase conjugation of the secondary antibody and DAB staining



**Western Blotting**

**Image 2.** Western blot analysis of ZADH1 Antibody (N-term) in 293 cell line lysates (35ug/lane).