



Datasheet for ABIN955636  
**anti-ZC3H15 antibody (C-Term)**



[Go to Product page](#)

2 Images

Overview

Quantity:	0.4 mL
Target:	ZC3H15
Binding Specificity:	AA 370-399, C-Term
Reactivity:	Human
Host:	Rabbit
Clonality:	Polyclonal
Application:	Western Blotting (WB), Immunohistochemistry (Paraffin-embedded Sections) (IHC (p)), Enzyme Immunoassay (EIA)

Product Details

Immunogen:	KLH conjugated synthetic peptide between 370-399 amino acids from the C-terminal region of human ZC3H15
Isotype:	Ig Fraction
Specificity:	This antibody detects ZC3H15 (C-term).
Cross-Reactivity (Details):	Species reactivity (tested):Human
Purification:	Protein A column followed by peptide affinity purification

Target Details

Target:	ZC3H15
Alternative Name:	ZC3H15 ( <a href="#">ZC3H15 Products</a> )

## Target Details

---

Background:	Protects DRG1 from proteolytic degradation (By similarity).Synonyms: DFRP1, DRG family-regulatory protein 1, HSPC303, HT010, LEREPO4, Likely ortholog of mouse immediate early response erythropoietin 4, MSTP012, PP730, Zinc finger CCCH domain-containing protein 15
Gene ID:	55854
NCBI Accession:	<a href="#">NP_060941</a>

## Application Details

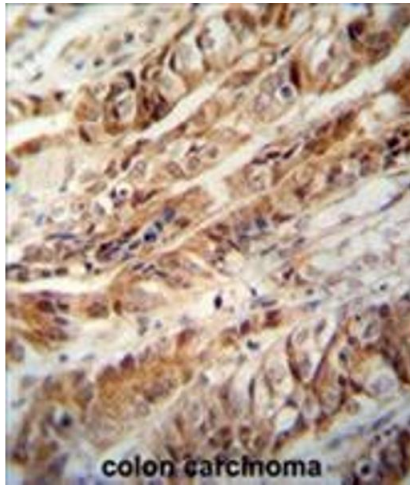
---

Application Notes:	Optimal working dilution should be determined by the investigator.
Restrictions:	For Research Use only

## Handling

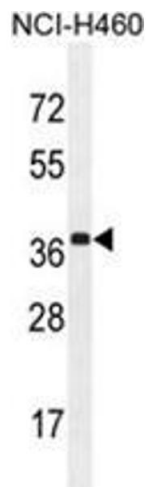
---

Format:	Liquid
Concentration:	0.25 mg/mL
Buffer:	PBS with 0.09 % (W/V) sodium azide
Preservative:	Sodium azide
Precaution of Use:	This product contains sodium azide: a POISONOUS AND HAZARDOUS SUBSTANCE which should be handled by trained staff only.
Handling Advice:	Avoid repeated freezing and thawing.
Storage:	4 °C/-20 °C
Storage Comment:	Store at 2 - 8 °C for up to six months or (in aliquots) at -20 °C for longer.



### Immunohistochemistry (Paraffin-embedded Sections)

**Image 1.** ZC3H15 antibody (C-term) immunohistochemistry analysis in formalin fixed and paraffin embedded human colon carcinoma followed by peroxidase conjugation of the secondary antibody and DAB staining. This data demonstrates the use of the ZC3H15 antibody (C-term) for immunohistochemistry. Clinical relevance has not been evaluated.



### Western Blotting

**Image 2.** ZC3H15 Antibody (C-term) western blot analysis in NCI-H460 cell line lysates (35 µg/lane). This demonstrates the ZC3H15 antibody detected the ZC3H15 protein (arrow).