



[Go to Product page](#)

Datasheet for ABIN955637

## anti-ZC3H3 antibody (C-Term)

### 2 Images

#### Overview

Quantity:	0.4 mL
Target:	ZC3H3
Binding Specificity:	AA 918-948, C-Term
Reactivity:	Human
Host:	Rabbit
Clonality:	Polyclonal
Conjugate:	This ZC3H3 antibody is un-conjugated
Application:	Western Blotting (WB), Immunohistochemistry (Paraffin-embedded Sections) (IHC (p)), Enzyme Immunoassay (EIA)

#### Product Details

Immunogen:	KLH conjugated synthetic peptide between 918-948 amino acids from the C-terminal region of human ZC3H3
Isotype:	Ig Fraction
Specificity:	This antibody detects ZC3H3 (C-term).
Cross-Reactivity (Details):	Species reactivity (tested):Human
Purification:	Protein A column followed by peptide affinity purification

#### Target Details

Target:	ZC3H3
---------	-------

## Target Details

---

Alternative Name:	ZC3H3 ( <a href="#">ZC3H3 Products</a> )
Background:	Contains 5 C3H1 type zinc fingersSynonyms: KIAA0150, ZC3HDC3, Zinc finger CCCH domain-containing protein 3
Gene ID:	23144
NCBI Accession:	<a href="#">NP_055932</a>

## Application Details

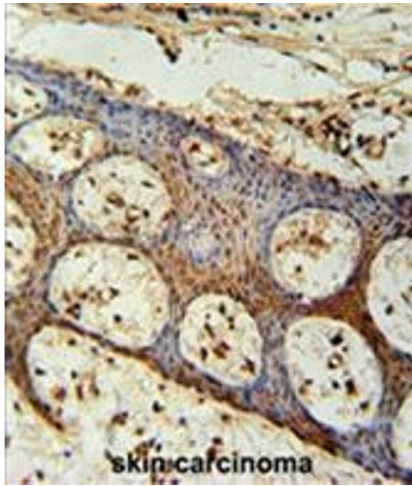
---

Application Notes:	Optimal working dilution should be determined by the investigator.
Restrictions:	For Research Use only

## Handling

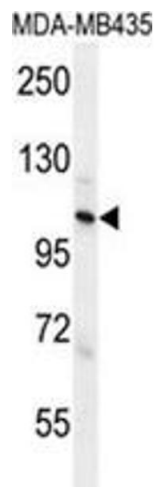
---

Format:	Liquid
Concentration:	0.25 mg/mL
Buffer:	PBS with 0.09 % (W/V) sodium azide
Preservative:	Sodium azide
Precaution of Use:	This product contains sodium azide: a POISONOUS AND HAZARDOUS SUBSTANCE which should be handled by trained staff only.
Handling Advice:	Avoid repeated freezing and thawing.
Storage:	4 °C/-20 °C
Storage Comment:	Store at 2 - 8 °C for up to six months or (in aliquots) at -20 °C for longer.



### Immunohistochemistry (Paraffin-embedded Sections)

**Image 1.** ZC3H3 Antibody (C-term) immunohistochemistry analysis in formalin fixed and paraffin embedded human skin carcinoma followed by peroxidase conjugation of the secondary antibody and DAB staining. This data demonstrates the use of the ZC3H3 Antibody (C-term) for immunohistochemistry. Clinical relevance has not been evaluated.



### Western Blotting

**Image 2.** ZC3H3 Antibody (C-term) western blot analysis in MDA-MB435 cell line lysates (35 µg/lane). This demonstrates the ZC3H3 antibody detected the ZC3H3 protein (arrow).