



[Go to Product page](#)

Datasheet for ABIN955644
anti-ZCRB1 antibody (C-Term)

2 Images

Overview

Quantity:	0.4 mL
Target:	ZCRB1
Binding Specificity:	AA 183-212, C-Term
Reactivity:	Human, Mouse
Host:	Rabbit
Clonality:	Polyclonal
Conjugate:	This ZCRB1 antibody is un-conjugated
Application:	Western Blotting (WB), Immunohistochemistry (Paraffin-embedded Sections) (IHC (p)), Enzyme Immunoassay (EIA)

Product Details

Immunogen:	KLH conjugated synthetic peptide between 183-212 amino acids from the C-terminal region of human ZCRB1
Isotype:	Ig Fraction
Specificity:	This antibody detects ZCRB1 (C-term).
Cross-Reactivity (Details):	Species reactivity (tested):Human, mouse
Purification:	Protein A column followed by peptide affinity purification

Target Details

Target:	ZCRB1
---------	-------

Target Details

Alternative Name: ZCRB1 ([ZCRB1 Products](#))

Background: Pre-mRNA splicing is catalyzed by the spliceosome. U12-type spliceosome binds U12-type pre-mRNAs and recognizes the 5' splice site and branch-point sequence. U11 and U12 snRNPs are components of U12-type spliceosome and function as a molecular bridge connecting both ends of the intron. The protein encoded by this gene contains a RNA recognition motif. It was identified as one of the protein components of U11/U12 snRNPs. This protein and many other U11/U12 snRNP proteins are highly conserved in organisms known to contain U12-type introns. These proteins have been shown to be essential for cell viability, suggesting the key roles in U12-type splicing. Synonyms: Zinc finger CCHC-type and RNA-binding motif-containing protein 1

Gene ID: 85437

NCBI Accession: [NP_149105](#)

Application Details

Application Notes: Optimal working dilution should be determined by the investigator.

Restrictions: For Research Use only

Handling

Format: Liquid

Concentration: 0.25 mg/mL

Buffer: PBS with 0.09 % (W/V) sodium azide

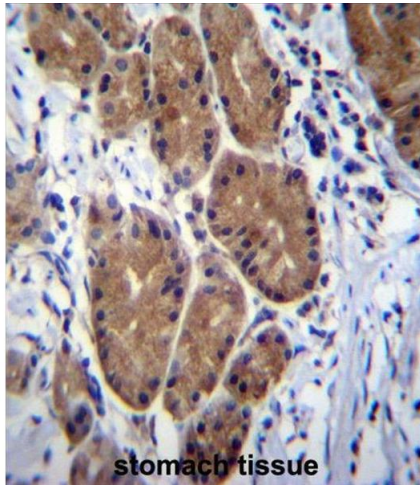
Preservative: Sodium azide

Precaution of Use: This product contains sodium azide: a POISONOUS AND HAZARDOUS SUBSTANCE which should be handled by trained staff only.

Handling Advice: Avoid repeated freezing and thawing.

Storage: 4 °C/-20 °C

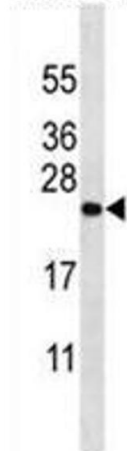
Storage Comment: Store at 2 - 8 °C for up to six months or (in aliquots) at -20 °C for longer.



Immunohistochemistry (Paraffin-embedded Sections)

Image 1. ZCRB1 Antibody (C-term) immunohistochemistry analysis in formalin fixed and paraffin embedded human stomach tissue followed by peroxidase conjugation of the secondary antibody and DAB staining. This data demonstrates the use of ZCRB1 Antibody (C-term) for immunohistochemistry. Clinical relevance has not been evaluated.

m.Neuro-2a



Western Blotting

Image 2. ZCRB1 Antibody (C-term) western blot analysis in mouse Neuro-2a cell line lysates (35 µg/lane). This demonstrates the ZCRB1 antibody detected the ZCRB1 protein (arrow).