

Datasheet for ABIN955655
anti-ZDHHC8 antibody (C-Term)



[Go to Product page](#)

1 Image

Overview

Quantity:	0.4 mL
Target:	ZDHHC8
Binding Specificity:	AA 531-561, C-Term
Reactivity:	Human, Mouse
Host:	Rabbit
Clonality:	Polyclonal
Conjugate:	This ZDHHC8 antibody is un-conjugated
Application:	Western Blotting (WB), Enzyme Immunoassay (EIA)

Product Details

Immunogen:	KLH conjugated synthetic peptide between 531-561 amino acids from the C-terminal region of human ZDHHC8
Isotype:	Ig Fraction
Specificity:	This antibody detects ZDHHC8 (C-term).
Cross-Reactivity (Details):	Species reactivity (tested): Human, mouse
Purification:	Protein A column followed by peptide affinity purification

Target Details

Target:	ZDHHC8
Alternative Name:	ZDHHC8 (ZDHHC8 Products)

Target Details

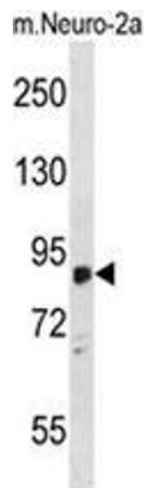
Background:	This gene encodes a four transmembrane protein that is a member of the zinc finger DHHC domain-containing protein family. The encoded protein may function as a palmitoyltransferase. Defects in this gene may be associated with a susceptibility to schizophrenia. Alternate splicing of this gene results in multiple transcript variants. A pseudogene of this gene is found on chromosome 22.Synonyms: DHHC-8, KIAA1292, Probable palmitoyltransferase ZDHHC8, ZDHHCL1, ZNF378, Zinc finger DHHC domain-containing protein 8, Zinc finger protein 378
Gene ID:	29801
NCBI Accession:	NP_001171953

Application Details

Application Notes:	Optimal working dilution should be determined by the investigator.
Restrictions:	For Research Use only

Handling

Format:	Liquid
Concentration:	0.25 mg/mL
Buffer:	PBS with 0.09 % (W/V) sodium azide
Preservative:	Sodium azide
Precaution of Use:	This product contains sodium azide: a POISONOUS AND HAZARDOUS SUBSTANCE which should be handled by trained staff only.
Handling Advice:	Avoid repeated freezing and thawing.
Storage:	4 °C/-20 °C
Storage Comment:	Store at 2 - 8 °C for up to six months or (in aliquots) at -20 °C for longer.



Western Blotting

Image 1. ZDHHC8 Antibody (C-term) western blot analysis in mouse Neuro-2a cell line lysates (35 µg/lane). This demonstrates the ZDHHC8 antibody detected the ZDHHC8 protein (arrow).