

Datasheet for ABIN955663

anti-ZFPM2 antibody (C-Term)



[Go to Product page](#)

1 Image

Overview

Quantity:	0.4 mL
Target:	ZFPM2
Binding Specificity:	AA 882-911, C-Term
Reactivity:	Human
Host:	Rabbit
Clonality:	Polyclonal
Conjugate:	This ZFPM2 antibody is un-conjugated
Application:	Western Blotting (WB), Enzyme Immunoassay (EIA)

Product Details

Immunogen:	KLH conjugated synthetic peptide between 882-911 amino acids from the C-terminal region of human ZFPM2
Isotype:	Ig Fraction
Specificity:	This antibody detects ZFPM2 / FOG2 (C-term).
Cross-Reactivity (Details):	Species reactivity (tested):Human
Purification:	Protein A column followed by peptide affinity purification

Target Details

Target:	ZFPM2
Alternative Name:	ZFPM2 / FOG2 (ZFPM2 Products)

Target Details

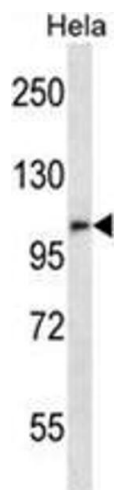
Background:	The zinc finger protein encoded by this gene is a widely expressed member of the FOG family of transcription factors. The family members modulate the activity of GATA family proteins, which are important regulators of hematopoiesis and cardiogenesis in mammals. It has been demonstrated that the protein can both activate and down-regulate expression of GATA-target genes, suggesting different modulation in different promoter contexts. A related mRNA suggests an alternatively spliced product but this information is not yet fully supported by the sequence. [provided by RefSeq].Synonyms: FOG-2, Friend of GATA 2, Friend of GATA protein 2, ZNF89B, Zinc finger protein 89B, Zinc finger protein multitype 2, hFOG-2
Gene ID:	23414
NCBI Accession:	NP_036214

Application Details

Application Notes:	Optimal working dilution should be determined by the investigator.
Restrictions:	For Research Use only

Handling

Format:	Liquid
Concentration:	0.25 mg/mL
Buffer:	PBS with 0.09 % (W/V) sodium azide
Preservative:	Sodium azide
Precaution of Use:	This product contains sodium azide: a POISONOUS AND HAZARDOUS SUBSTANCE which should be handled by trained staff only.
Handling Advice:	Avoid repeated freezing and thawing.
Storage:	4 °C/-20 °C
Storage Comment:	Store at 2 - 8 °C for up to six months or (in aliquots) at -20 °C for longer.



Western Blotting

Image 1. ZFPM2 Antibody (C-term) western blot analysis in HeLa cell line lysates (35 µg/lane). This demonstrates the ZFPM2 antibody detected the ZFPM2 protein (arrow).