



[Go to Product page](#)

Datasheet for ABIN955665  
**anti-ZFY antibody (Middle Region)**

1 Image

### Overview

Quantity:	0.4 mL
Target:	ZFY
Binding Specificity:	AA 322-351, Middle Region
Reactivity:	Human
Host:	Rabbit
Clonality:	Polyclonal
Application:	Western Blotting (WB), Enzyme Immunoassay (EIA)

### Product Details

Immunogen:	KLH conjugated synthetic peptide between 322-351 amino acids from the Central region of human ZFY
Isotype:	Ig Fraction
Specificity:	This antibody detects ZFY (Center).
Cross-Reactivity (Details):	Species reactivity (tested):Human
Purification:	Protein A column followed by peptide affinity purification

### Target Details

Target:	ZFY
Alternative Name:	ZFY ( <a href="#">ZFY Products</a> )
Background:	This gene encodes a zinc finger-containing protein that may function as a transcription factor.

## Target Details

This gene was once a candidate gene for the testis-determining factor (TDF) and was erroneously referred to as TDF. Synonyms: Zinc finger Y-chromosomal protein

Gene ID: 7544

NCBI Accession: [NP\\_001138747](#)

## Application Details

Application Notes: Optimal working dilution should be determined by the investigator.

Restrictions: For Research Use only

## Handling

Format: Liquid

Concentration: 0.25 mg/mL

Buffer: PBS with 0.09 % (W/V) sodium azide

Preservative: Sodium azide

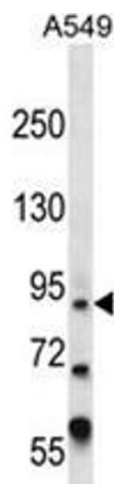
Precaution of Use: This product contains sodium azide: a POISONOUS AND HAZARDOUS SUBSTANCE which should be handled by trained staff only.

Handling Advice: Avoid repeated freezing and thawing.

Storage: 4 °C/-20 °C

Storage Comment: Store at 2 - 8 °C for up to six months or (in aliquots) at -20 °C for longer.

## Images



### Western Blotting

**Image 1.** ZFY Antibody (Center) western blot analysis in A549 cell line lysates (35 µg/lane). This demonstrates the ZFY antibody detected the ZFY protein (arrow).