



[Go to Product page](#)

Datasheet for ABIN955673

anti-SLC39A8 antibody (Middle Region)

2 Images

Overview

Quantity:	0.4 mL
Target:	SLC39A8
Binding Specificity:	AA 225-254, Middle Region
Reactivity:	Human
Host:	Rabbit
Clonality:	Polyclonal
Conjugate:	This SLC39A8 antibody is un-conjugated
Application:	Western Blotting (WB), Flow Cytometry (FACS), Enzyme Immunoassay (EIA)

Product Details

Immunogen:	KLH conjugated synthetic peptide between 225~254 amino acids from the Center region of Human SLC39A8 Genename: SLC39A8
Isotype:	Ig Fraction
Specificity:	Recognizes SLC39A8 (Center).
Purification:	Protein A column followed by peptide Affinity purification

Target Details

Target:	SLC39A8
Alternative Name:	Zinc Transporter ZIP8 / SLC39A8 (SLC39A8 Products)
Background:	S39A8 encodes a member of the SLC39 family of solute-carrier genes, which show structural

Target Details

characteristics of zinc transporters. The encoded protein is glycosylated and found in the plasma membrane and mitochondria, and functions in the cellular import of zinc at the onset of inflammation. It is also thought to be the primary transporter of the toxic cation cadmium, which is found in cigarette smoke. Synonyms: BCG-induced integral membrane protein in monocyte clone 103 protein, BIGM103, LIV-1 subfamily of ZIP zinc transporter 6, LZT-Hs6, Solute carrier family 39 member 8, ZIP-8, ZIP8, Zrt- and Irt-like protein 8

Gene ID: 64116

NCBI Accession: [NP_001128618](#)

Application Details

Application Notes: Optimal working dilution should be determined by the investigator.

Restrictions: For Research Use only

Handling

Format: Liquid

Concentration: 0.25 mg/mL

Buffer: PBS with 0.09 % (W/V) Sodium Azide as preservative

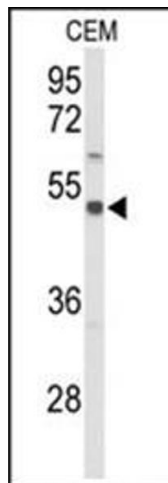
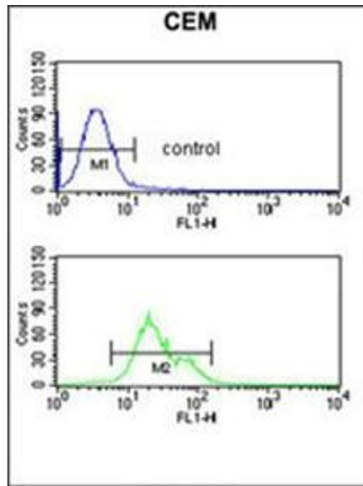
Preservative: Sodium azide

Precaution of Use: This product contains sodium azide: a POISONOUS AND HAZARDOUS SUBSTANCE which should be handled by trained staff only.

Handling Advice: Avoid repeated freezing and thawing.

Storage: 4 °C/-20 °C

Storage Comment: Store the antibody undiluted at 2-8 °C for one month or (in aliquots) at -20 °C for longer.



Flow Cytometry

Image 1. Flow Cytometric analysis of CEM cells using SLC39A8 Antibody (Center) Cat.-No AP53783PU-N (Bottom histogram) compared to a Negative Control cell (Top histogram). FITC-conjugated Goat-anti-Rabbit secondary antibodies were used for the analysis.

Western Blotting

Image 2. Western blot analysis in CEM cerebellum cell line lysates (35 ug/lane) using SLC39A8 Antibody (Center) Cat.-No AP53783PU-N. SLC39A8 (arrow) was detected using the purified Pab.