

Datasheet for ABIN955700
anti-ZFP30 antibody (N-Term)[Go to Product page](#)

3 Images

Overview

Quantity:	0.4 mL
Target:	ZFP30
Binding Specificity:	AA 1-30, N-Term
Reactivity:	Human
Host:	Rabbit
Clonality:	Polyclonal
Conjugate:	This ZFP30 antibody is un-conjugated
Application:	Western Blotting (WB), Flow Cytometry (FACS), Immunohistochemistry (Paraffin-embedded Sections) (IHC (p)), Enzyme Immunoassay (EIA)

Product Details

Immunogen:	KLH conjugated synthetic peptide between 1-30 amino acids from the N-terminal region of human ZNF30
Isotype:	Ig Fraction
Specificity:	This antibody detects ZNF30 (N-term).
Cross-Reactivity (Details):	Species reactivity (tested):Human
Purification:	Protein A column followed by peptide affinity purification

Target Details

Target:	ZFP30
---------	-------

Target Details

Alternative Name:	ZNF30 (ZFP30 Products)
Background:	May be involved in transcriptional regulation.Synonyms: Zinc finger protein KOX28
Gene ID:	90075
NCBI Accession:	NP_001092907

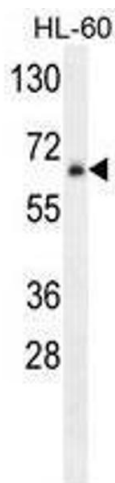
Application Details

Application Notes:	Optimal working dilution should be determined by the investigator.
Restrictions:	For Research Use only

Handling

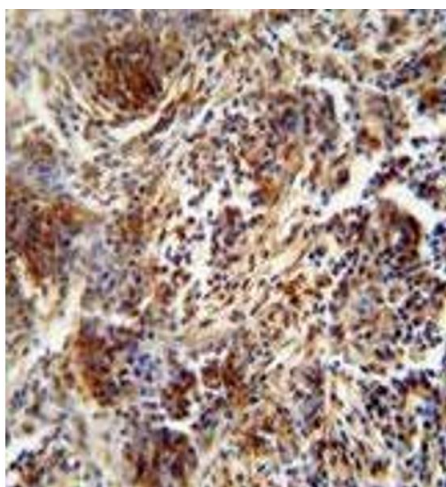
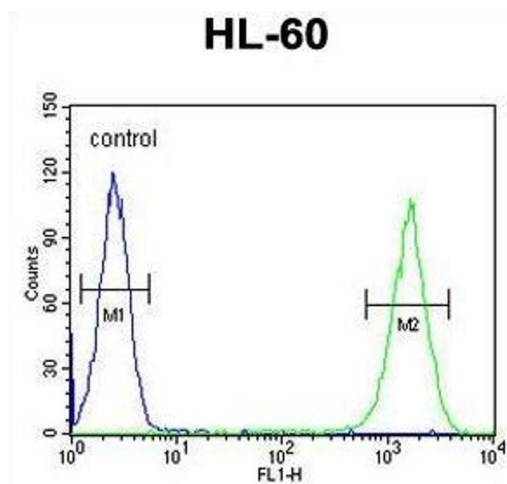
Format:	Liquid
Concentration:	0.25 mg/mL
Buffer:	PBS with 0.09 % (W/V) sodium azide
Preservative:	Sodium azide
Precaution of Use:	This product contains sodium azide: a POISONOUS AND HAZARDOUS SUBSTANCE which should be handled by trained staff only.
Handling Advice:	Avoid repeated freezing and thawing.
Storage:	4 °C/-20 °C
Storage Comment:	Store at 2 - 8 °C for up to six months or (in aliquots) at -20 °C for longer.

Images



Western Blotting

Image 1. ZNF30 Antibody (N-term) western blot analysis in HL-60 cell line lysates (35 µg/lane). This demonstrates the ZNF30 antibody detected the ZNF30 protein (arrow).



Flow Cytometry

Image 2. ZNF30 Antibody (N-term) flow cytometric analysis of HL-60 cells (right histogram) compared to a negative control cell (left histogram). FITC-conjugated goat-anti-rabbit secondary antibodies were used for the analysis.

Immunohistochemistry (Paraffin-embedded Sections)

Image 3. ZNF30 antibody (N-term) immunohistochemistry analysis in formalin fixed and paraffin embedded human lung carcinoma followed by peroxidase conjugation of the secondary antibody and DAB staining. This data demonstrates the use of the ZNF30 antibody (N-term) for immunohistochemistry. Clinical relevance has not been evaluated.