



[Go to Product page](#)

Datasheet for ABIN955703

anti-ZNF322P1 antibody (C-Term)

1 Image

Overview

Quantity:	0.4 mL
Target:	ZNF322P1
Binding Specificity:	AA 333-362, C-Term
Reactivity:	Human
Host:	Rabbit
Clonality:	Polyclonal
Conjugate:	This ZNF322P1 antibody is un-conjugated
Application:	Western Blotting (WB), Enzyme Immunoassay (EIA)

Product Details

Immunogen:	KLH conjugated synthetic peptide between 333-362 amino acids from the C-terminal region of human ZNF322B
Isotype:	Ig Fraction
Specificity:	This antibody detects ZNF322B (C-term).
Cross-Reactivity (Details):	Species reactivity (tested):Human
Purification:	Protein A column followed by peptide affinity purification

Target Details

Target:	ZNF322P1
Alternative Name:	ZNF322B (ZNF322P1 Products)

Target Details

Background:	May be involved in transcriptional regulation (By similarity)Synonyms: Zinc finger protein 322B
Gene ID:	387328
NCBI Accession:	NP_945356

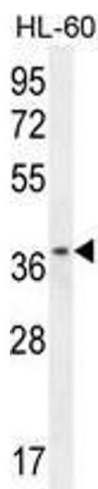
Application Details

Application Notes:	Optimal working dilution should be determined by the investigator.
Restrictions:	For Research Use only

Handling

Format:	Liquid
Concentration:	0.25 mg/mL
Buffer:	PBS with 0.09 % (W/V) sodium azide
Preservative:	Sodium azide
Precaution of Use:	This product contains sodium azide: a POISONOUS AND HAZARDOUS SUBSTANCE which should be handled by trained staff only.
Handling Advice:	Avoid repeated freezing and thawing.
Storage:	4 °C/-20 °C
Storage Comment:	Store at 2 - 8 °C for up to six months or (in aliquots) at -20 °C for longer.

Images



Western Blotting

Image 1. ZNF322B Antibody (C-term) western blot analysis in HL-60 cell line lysates (35 µg/lane). This demonstrates the ZNF322B antibody detected the ZNF322B protein (arrow).