

Datasheet for ABIN955725  
**anti-ZNF667 antibody (Middle Region)**[Go to Product page](#)

## 3 Images

## Overview

Quantity:	0.4 mL
Target:	ZNF667
Binding Specificity:	AA 310-340, Middle Region
Reactivity:	Human
Host:	Rabbit
Clonality:	Polyclonal
Conjugate:	This ZNF667 antibody is un-conjugated
Application:	Western Blotting (WB), Flow Cytometry (FACS), Immunohistochemistry (Paraffin-embedded Sections) (IHC (p)), Enzyme Immunoassay (EIA)

## Product Details

Immunogen:	KLH conjugated synthetic peptide between 310-340 amino acids from the Central region of human ZNF667
Isotype:	Ig Fraction
Specificity:	This antibody detects ZNF667 (Center).
Cross-Reactivity (Details):	Species reactivity (tested):Human
Purification:	Protein A column followed by peptide affinity purification

## Target Details

Target:	ZNF667
---------	--------

## Target Details

Alternative Name:	ZNF667 ( <a href="#">ZNF667 Products</a> )
Background:	May be involved in transcriptional regulation (By similarity).Synonyms: Zinc finger protein 667
Gene ID:	63934
NCBI Accession:	<a href="#">NP_071386</a>

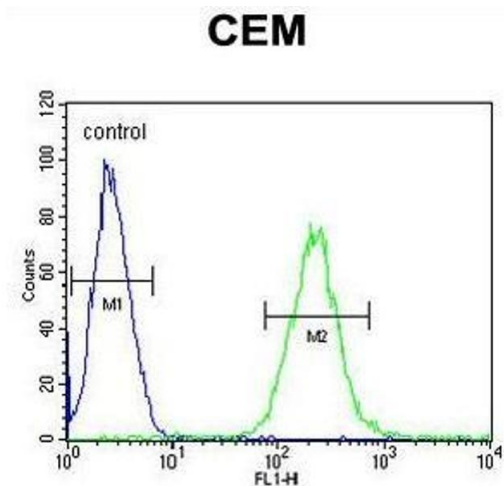
## Application Details

Application Notes:	Optimal working dilution should be determined by the investigator.
Restrictions:	For Research Use only

## Handling

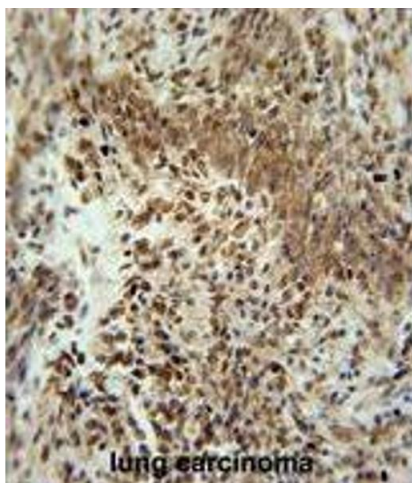
Format:	Liquid
Concentration:	0.25 mg/mL
Buffer:	PBS with 0.09 % (W/V) sodium azide
Preservative:	Sodium azide
Precaution of Use:	This product contains sodium azide: a POISONOUS AND HAZARDOUS SUBSTANCE which should be handled by trained staff only.
Handling Advice:	Avoid repeated freezing and thawing.
Storage:	4 °C/-20 °C
Storage Comment:	Store at 2 - 8 °C for up to six months or (in aliquots) at -20 °C for longer.

## Images



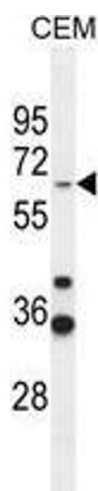
### Flow Cytometry

**Image 1.** ZNF667 Antibody (Center) flow cytometric analysis of CEM cells (right histogram) compared to a negative control cell (left histogram). FITC-conjugated goat-anti-rabbit secondary antibodies were used for the analysis.



### Immunohistochemistry (Paraffin-embedded Sections)

**Image 2.** ZNF667 Antibody (Center) immunohistochemistry analysis in formalin fixed and paraffin embedded human lung carcinoma followed by peroxidase conjugation of the secondary antibody and DAB staining. This data demonstrates the use of the ZNF667 Antibody (Center) for immunohistochemistry. Clinical relevance has not been evaluated.



### Western Blotting

**Image 3.** ZNF667 Antibody (Center) western blot analysis in CEM cell line lysates (35 µg/lane). This demonstrates the ZNF667 antibody detected the ZNF667 protein (arrow).