



Datasheet for ABIN955744  
**anti-ZNF829 antibody (Middle Region)**



[Go to Product page](#)

2 Images

Overview

Quantity:	0.4 mL
Target:	ZNF829
Binding Specificity:	AA 134-163, Middle Region
Reactivity:	Human
Host:	Rabbit
Clonality:	Polyclonal
Application:	Western Blotting (WB), Flow Cytometry (FACS), Enzyme Immunoassay (EIA)

Product Details

Immunogen:	KLH conjugated synthetic peptide between 134-163 amino acids from the Central region of human ZNF829
Isotype:	Ig Fraction
Specificity:	This antibody detects ZNF829 (Center).
Cross-Reactivity (Details):	Species reactivity (tested):Human
Purification:	Protein A column followed by peptide affinity purification

Target Details

Target:	ZNF829
Alternative Name:	ZNF829 ( <a href="#">ZNF829 Products</a> )
Background:	May be involved in transcriptional regulation.Synonyms: Zinc finger protein 829

## Target Details

Gene ID: 374899

NCBI Accession: [NP\\_001032309](#)

## Application Details

Application Notes: Optimal working dilution should be determined by the investigator.

Restrictions: For Research Use only

## Handling

Format: Liquid

Concentration: 0.25 mg/mL

Buffer: PBS with 0.09 % (W/V) sodium azide

Preservative: Sodium azide

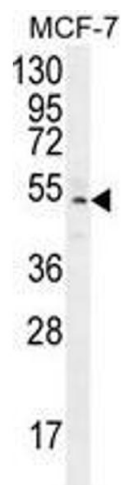
Precaution of Use: This product contains sodium azide: a POISONOUS AND HAZARDOUS SUBSTANCE which should be handled by trained staff only.

Handling Advice: Avoid repeated freezing and thawing.

Storage: 4 °C/-20 °C

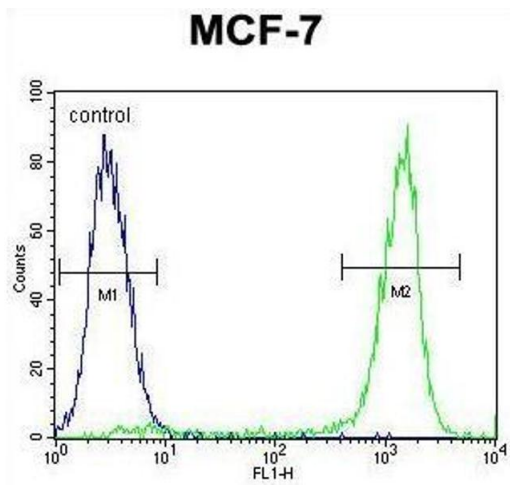
Storage Comment: Store at 2 - 8 °C for up to six months or (in aliquots) at -20 °C for longer.

## Images



### Western Blotting

**Image 1.** ZNF829 Antibody (Center) western blot analysis in MCF-7 cell line lysates (35 µg/lane). This demonstrates the ZNF829 antibody detected the ZNF829 protein (arrow).



#### Flow Cytometry

**Image 2.** ZNF829 Antibody (Center) flow cytometric analysis of MCF-7 cells (right histogram) compared to a negative control cell (left histogram). FITC-conjugated goat-anti-rabbit secondary antibodies were used for the analysis.