



[Go to Product page](#)

Datasheet for ABIN955760

anti-ZSWIM6 antibody (C-Term)

2 Images

Overview

Quantity:	0.4 mL
Target:	ZSWIM6
Binding Specificity:	AA 1153-1183, C-Term
Reactivity:	Human
Host:	Rabbit
Clonality:	Polyclonal
Conjugate:	This ZSWIM6 antibody is un-conjugated
Application:	Western Blotting (WB), Immunohistochemistry (Paraffin-embedded Sections) (IHC (p)), Enzyme Immunoassay (EIA)

Product Details

Immunogen:	KLH conjugated synthetic peptide between 1153-1183 amino acids from the C-terminal region of human ZSWIM6
Isotype:	Ig Fraction
Specificity:	This antibody detects ZSWIM6 (C-term).
Cross-Reactivity (Details):	Species reactivity (tested):Human
Purification:	Protein A column followed by peptide affinity purification

Target Details

Target:	ZSWIM6
---------	--------

Target Details

Alternative Name:	ZSWIM6 (ZSWIM6 Products)
Background:	Synonyms: FOXD4L3, Forkhead box protein D4-like 3
Gene ID:	57688
NCBI Accession:	NP_065979

Application Details

Application Notes:	Optimal working dilution should be determined by the investigator.
Restrictions:	For Research Use only

Handling

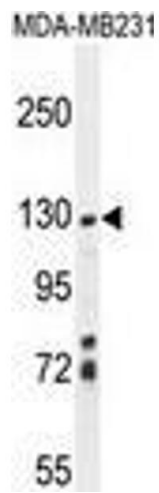
Format:	Liquid
Concentration:	0.25 mg/mL
Buffer:	PBS with 0.09 % (W/V) sodium azide
Preservative:	Sodium azide
Precaution of Use:	This product contains sodium azide: a POISONOUS AND HAZARDOUS SUBSTANCE which should be handled by trained staff only.
Handling Advice:	Avoid repeated freezing and thawing.
Storage:	4 °C/-20 °C
Storage Comment:	Store at 2 - 8 °C for up to six months or (in aliquots) at -20 °C for longer.

Images



Immunohistochemistry (Paraffin-embedded Sections)

Image 1. ZSWIM6 antibody (C-term) immunohistochemistry analysis in formalin fixed and paraffin embedded human skeletal muscle followed by peroxidase conjugation of the secondary antibody and DAB staining. This data demonstrates the use of the ZSWIM6 antibody (C-term) for immunohistochemistry. Clinical relevance has not been evaluated.



Western Blotting

Image 2. ZSWIM6 Antibody (C-term) western blot analysis in MDA-MB231 cell line lysates (35 µg/lane). This demonstrates the ZSWIM6 antibody detected the ZSWIM6 protein (arrow).