



[Go to Product page](#)

Datasheet for ABIN95626  
**anti-Biotin antibody**

2 Images

8 Publications

### Overview

Quantity:	2 mL
Target:	Biotin
Reactivity:	Please inquire
Host:	Rabbit
Clonality:	Polyclonal
Conjugate:	This Biotin antibody is un-conjugated
Application:	Western Blotting (WB), ELISA, Immunoprecipitation (IP), Dot Blot (DB)

### Product Details

Immunogen:	Biotin conjugated to Keyhole Limpet Hemocyanin (KLH) Immunogentype:Native
Characteristics:	Concentration Definition: by Refractometry

### Target Details

Target:	Biotin
Abstract:	<a href="#">Biotin Products</a>
Target Type:	Chemical

### Application Details

Application Notes:	Suitable for immunoblotting (western or dot blot), ELISA, immunoprecipitation and most immunological methods requiring high titer and specificity.
--------------------	--

## Application Details

---

Restrictions: For Research Use only

## Handling

---

Format: Lyophilized

Reconstitution: Restore with deionized water (or equivalent)

Concentration: 78 mg/mL

Buffer: 0.01 M Sodium Phosphate, 0.15 M Sodium Chloride, pH 7.2

Preservative: Sodium azide

Precaution of Use: This product contains sodium azide: a POISONOUS AND HAZARDOUS SUBSTANCE which should be handled by trained staff only.

Storage: 4 °C

## Publications

---

Product cited in:

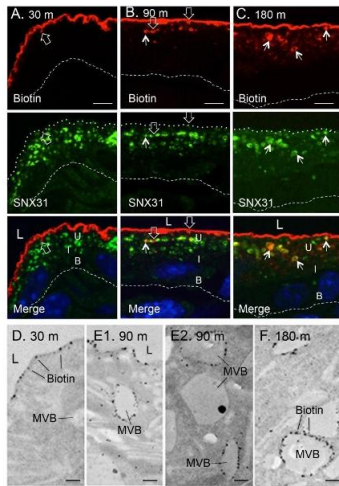
Ercan, Han, Di Nardo, Winden, Han, Hoyo, Saffari, Leask, Geschwind, Sahin: "Neuronal CTGF/CCN2 negatively regulates myelination in a mouse model of tuberous sclerosis complex." in: **The Journal of experimental medicine**, Vol. 214, Issue 3, pp. 681-697, (2017) ([PubMed](#)).

Ko, Ko, Shieh, Chi, Chen, Chen, Yu, Yang, Chang: "Advanced glycation end products influence oral cancer cell survival via Bcl-xl and Nrf-2 regulation in vitro." in: **Oncology letters**, Vol. 13, Issue 5, pp. 3328-3334, (2017) ([PubMed](#)).

van der Hoorn, de Haan, Berbée, Havekes, Jukema, Rensen, Princen: "Niacin increases HDL by reducing hepatic expression and plasma levels of cholesteryl ester transfer protein in APOE\*3Leiden.CETP mice." in: **Arteriosclerosis, thrombosis, and vascular biology**, Vol. 28, Issue 11, pp. 2016-22, (2008) ([PubMed](#)).

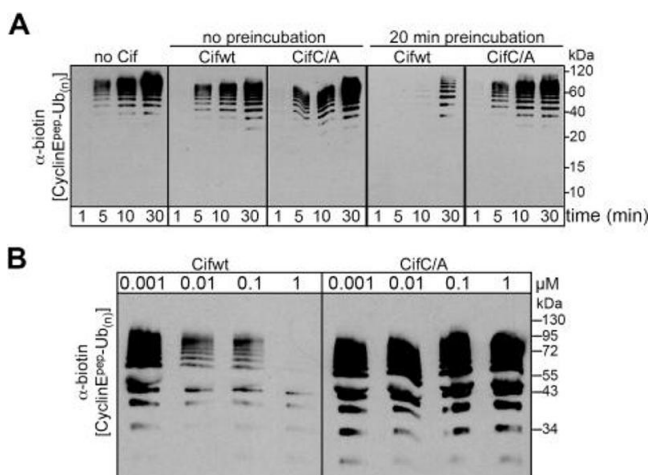
van der Hoogt, de Haan, Westerterp, Hoekstra, Dallinga-Thie, Romijn, Princen, Jukema, Havekes, Rensen: "Fenofibrate increases HDL-cholesterol by reducing cholesteryl ester transfer protein expression." in: **Journal of lipid research**, Vol. 48, Issue 8, pp. 1763-71, (2007) ([PubMed](#)).

There are more publications referencing this product on: [Product page](#)



### Immunostaining

**Image 1.** The endocytosed apical urothelial proteins are targeted to the SNX31-positive MVBs. (A–C) The luminal surface of the mouse bladder was biotinylated for 15 minutes, followed by a chase period as indicated (30, 90 and 180 min). Samples were co-stained for biotin (red; top row) and SNX31 (green, middle), with merged images shown at the bottom. Note that the internalized, biotinylated proteins (mainly uroplakins; [45]) were initially associated with SNX31-free vesicles (open arrows), and later became co-localized with SNX31 (arrows). (D–F) EM immunolocalization showing the progressive association of the endocytosed (biotinylated) surface-proteins (mainly uroplakins) with the multivesicular vesicles (MVBs). Symbols are the same as in Fig. 1. Scale bars = 10  $\mu\text{m}$  (A to C), or 0.2  $\mu\text{m}$  (D to F). Source: PMC4051706



### Western Blotting

**Image 2.** Cif decreases neddylated SCF-mediated substrate polyubiquitylation in vitro. (A) Anti-biotin western blot showing time courses of polyubiquitylation of a biotin-labeled cyclin E phosphopeptide by NEDD8-modified SCFFbw7 $\Delta$ D in the presence or absence of purified His-tagged wild type Cif (Cifwt) or Cif catalytic Cys-to-Ala (CifC/A) mutant. Reactions were performed by adding Cif straight to the reaction (no preincubation), or after 20 min room temperature incubation of NEDD8-modified SCFFbw7(263-C) with Cif prior to initiating the reaction by adding all other proteins for polyubiquitylation activity (20 min preincubation). (B) Anti-biotin western blot showing titration of the indicated amount of Cifwt or CifC/A with 200 nM SCFFbw7 $\Delta$ D, prior to 10-min long polyubiquitylation reactions for a biotin-labeled cyclin E phosphopeptide. In all these reactions, the indicated version of Cif was preincubated with NEDD8-modified SCFFbw7 $\Delta$ D for 1 h

prior to reaction initiation. Source: PMC2947998