



Datasheet for ABIN95638 anti-BIVM antibody



[Go to Product page](#)

1 Image

Overview

Quantity:	100 µL
Target:	BIVM
Reactivity:	Human
Host:	Rabbit
Clonality:	Polyclonal
Conjugate:	This BIVM antibody is un-conjugated
Application:	Western Blotting (WB), ELISA, Immunohistochemistry (IHC), Immunoprecipitation (IP)

Product Details

Immunogen:	BIVM peptide corresponding to a region near carboxy terminus of the human protein conjugated to Keyhole Limpet Hemocyanin (KLH). Sequence information: C-R-N-S-G-Y-Q-G-Y-S-D-Y-D-G-N-D
Characteristics:	Concentration Definition: by Refractometry

Target Details

Target:	BIVM
Alternative Name:	BIVM (BIVM Products)
Background:	BIVM (for basic, immunoglobulin-like variable motif-containing) refers to a recently identified gene product that maps to human chromosome 13q32-q33 and is predicted to encode a 503-amino acid protein. BIVM shows ubiquitous expression in normal human tissue and the presence of a 5' CpG island suggests it is a housekeeping gene. BIVM is likely essential for

Target Details

some aspect of basic cellular function. BIVM is highly charged and localizes to the cytoplasm and nucleus where it may bind to either DNA or RNA or associate with other cellular proteins. Significant sequence homology exists with many organisms.
Synonyms: Basic immunoglobulin-like variable motif-containing protein BIVM

Gene ID: 54841

UniProt: [Q86UB2](#)

Application Details

Application Notes: This polyclonal antibody reacts human BIVM at the C-terminal region and is useful for detection of BIVM by ELISA or western blotting. Although not tested, this antibody is likely functional in immunohistochemistry and immunoprecipitation. For immunoblotting a 57 kDa band corresponding to human BIVM is detected. Unstimulated HeLa cells can be used as a positive control.

Restrictions: For Research Use only

Handling

Format: Liquid

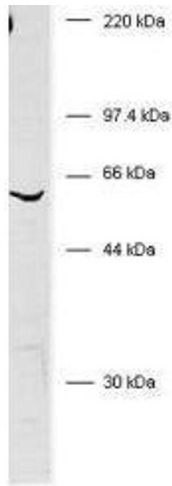
Concentration: 90 mg/mL

Buffer: 0.02 M Potassium Phosphate, 0.15 M Sodium Chloride, pH 7.2

Preservative: Sodium azide

Precaution of Use: This product contains sodium azide: a POISONOUS AND HAZARDOUS SUBSTANCE which should be handled by trained staff only.

Storage: -20 °C



Western Blotting

Image 1. Western blot of anti-human BIVM. Whole cell HeLa lysate was used to probe for endogenous BIVM using Rabbit-anti-Human BIVM (C-terminal specific) polyclonal antibody. A 57 kDa band corresponding to human BIVM protein is detected using a 1:1,000 dilution of the antiserum incubated for 1 hour at room temperature. Washes with 1% Tween-20 TBS preceded reaction with HRP Gt-a-Rabbit IgG (H&L) code 611-103-122 diluted 1:10,000 and incubated for 1 hour at room temperature. The blot was developed using a chemiluminescent detection method (AP ECL 60 sec followed by a 45 sec exposure). Other detection methods will yield similar results.