

Datasheet for ABIN956403

anti-HCV 1b NS5B antibody (AA 111-130)



[Go to Product page](#)

2 Images

Overview

Quantity:	100 µg
Target:	HCV 1b NS5B (HCV NS5b)
Binding Specificity:	AA 111-130
Reactivity:	Hepatitis C Virus (HCV)
Host:	CHO Cells
Clonality:	Monoclonal
Conjugate:	This HCV 1b NS5B antibody is un-conjugated
Application:	Western Blotting (WB), ELISA, Immunofluorescence (IF)

Product Details

Immunogen:	Recombinant Hepatitis C Virus subtype 1b nonstructuralprotein 5B (NS5B) RNA-dependent RNA polymerase (RdRp)
Sequence:	LSSKAVNHIR SVWKDLLED T
Clone:	9A2
Isotype:	IgG1
Specificity:	Human, HCV subtype 1b NS5B
Characteristics:	Partially humanized, chimeric recombinant monoclonal
Purification:	purifiedby protein G affinity chromatography

Target Details

Target:	HCV 1b NS5B (HCV NS5b)
Abstract:	HCV NS5b Products
Target Type:	Viral Protein
Background:	<p>Non-structural protein 5B (NS5B) represents the RNA-dependent RNA polymerase (RdRp) of Hepatitis C Virus, which is a small positive strand RNA virus in the family Flaviviridae. HCV is a major causative agent of acute and chronic hepatitis, hepatocellular carcinoma and liver cirrhosis. The single subunit RNA-dependent RNA polymerase is absolutely essential for the viral replication. Antibody is derived from mouse anti-HCV NS5B monoclonal antibody 9A2 expressing mouse hybridoma culture. cDNA of antibody variable regions were isolated and cloned into the human IgG1 constant region-containing antibody expression vector. Partially humanized, chimeric antibody was expressed by QMCF CHO EB NALT85 cell line. Antibody is used for high-specific efficient detection of soluble or membrane-bound proteins fused with 9A2 epitope-tag sequence. For more information please visit: http://icosagen.com/cell-based-assay/qmcf-assay-overview</p>
UniProt:	Q9WMX2

Application Details

Application Notes:	ELISA titer 1:1000, Western immunoblotting, reduced conditions, dilution 1:1000, Immunofluorescence 1:1000. Monoclonal antibody working titer has to be established practically for each particular antigen and assay format.
Restrictions:	For Research Use only

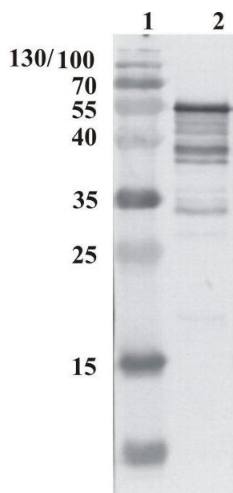
Handling

Format:	Liquid
Concentration:	1 mg/ml
Buffer:	PBS pH 7.4, with 0.1%
Preservative:	Sodium azide
Precaution of Use:	This product contains sodium azide: a POISONOUS AND HAZARDOUS SUBSTANCE which should be handled by trained staff only.
Handling Advice:	Divide antibody into aliquots prior usage. Avoid multiple freeze-thaw cycles as product degradation may result.

Handling

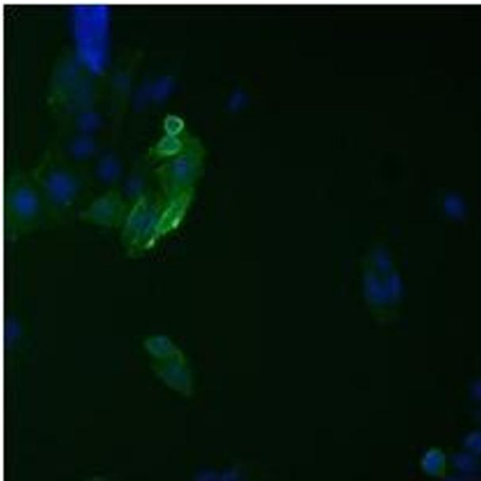
Storage:	-20 °C
Storage Comment:	This product is shipped in non-frozen liquid form in ambient conditions

Images



Western Blotting

Image 1. Western Blot testing of anti-HCV NS5B protein using chimeric anti-HCV NS5B antibody 9A2. Line 1. Protein size marker, Line 2. 20 ng of purified recombinant HCV NS5B was loaded per lane.



Immunofluorescence

Image 2. Immunofluorescence analysis on ETAR protein fused with 9A2 epitope tag. ETAR-9A2 is expressed in CHOEBNALT85 cell line.