

Datasheet for ABIN956632
anti-FLT1 antibody (AA 1251-1338)



[Go to Product page](#)

3 Images

Overview

Quantity:	100 µg
Target:	FLT1
Binding Specificity:	AA 1251-1338
Reactivity:	Human
Host:	Mouse
Clonality:	Monoclonal
Conjugate:	This FLT1 antibody is un-conjugated
Application:	Western Blotting (WB), Immunohistochemistry (IHC), Immunohistochemistry (Paraffin-embedded Sections) (IHC (p))

Product Details

Brand:	IHC-plus™
Immunogen:	GST fusion protein corresponding to aa1251-1338 of human Flt-1. Type of Immunogen: Fusion protein
Isotype:	IgG1 kappa
Specificity:	Recognizes human Flt-1, Mr ~180kD.
Purification:	Protein G purified

Target Details

Target:	FLT1
---------	------

Target Details

Alternative Name:	FLKT1 / FLT-1 / VEGFR1 (FLT1 Products)
Background:	Name/Gene ID: FLT1 Subfamily: VEGF Receptor Family: Protein Kinase Synonyms: FLT1, FLT, FLT-1, Fms-related tyrosine kinase 1, SFlt1, VEGF-r1, VEG-R1, Tyrosine-protein kinase FRT, VEGFR-1, Fms-like tyrosine kinase 1, FRT, VEGF receptor 1, VEGFf-rl, VEGFR1
Gene ID:	2321
UniProt:	P17948
Pathways:	RTK Signaling , Signaling Events mediated by VEGFR1 and VEGFR2 , VEGFR1 Specific Signals

Application Details

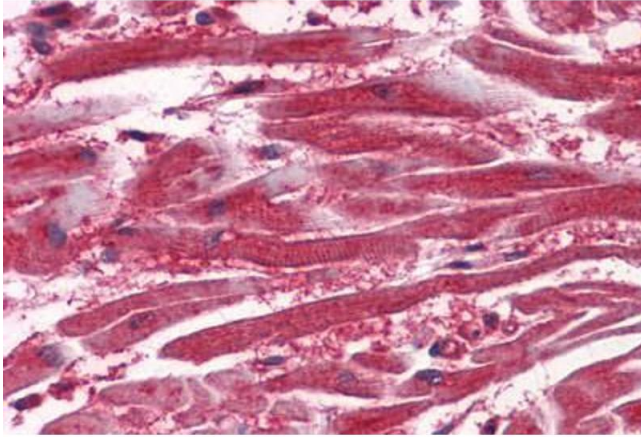
Application Notes:	Approved: IHC, IHC-P (10 µg/mL), WB Usage: Western Blot Analysis: 0.5-2 µg/mL detected Flt-1 in Human umbilical vein endothelium (HUVEC) membrane preps. Not recommended for: IP
Comment:	Target Species of Antibody: Human
Restrictions:	For Research Use only

Handling

Format:	Liquid
Concentration:	Lot specific
Buffer:	0.1 M Tris-glycine, pH 7.4, 0.15 M sodium chloride, 0.05 % sodium azide, 30 % glycerol.
Preservative:	Sodium azide
Precaution of Use:	This product contains Sodium azide: a POISONOUS AND HAZARDOUS SUBSTANCE which should be handled by trained staff only.
Handling Advice:	Avoid repeat freeze-thaw cycles.
Storage:	4 °C, -20 °C

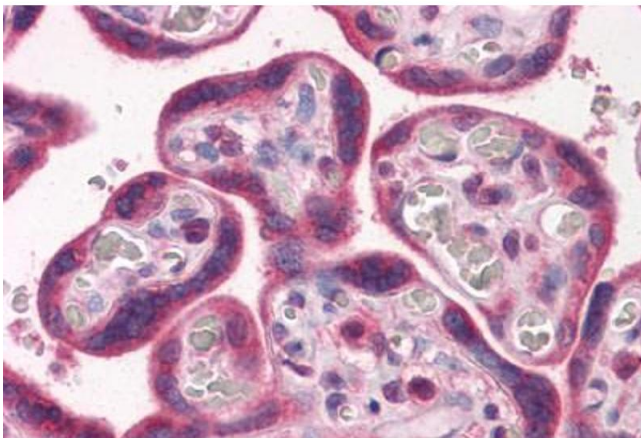
Storage Comment: Short term: 4°C. Long term: Store at -20°C. Avoid freeze-thaw cycles.

Images



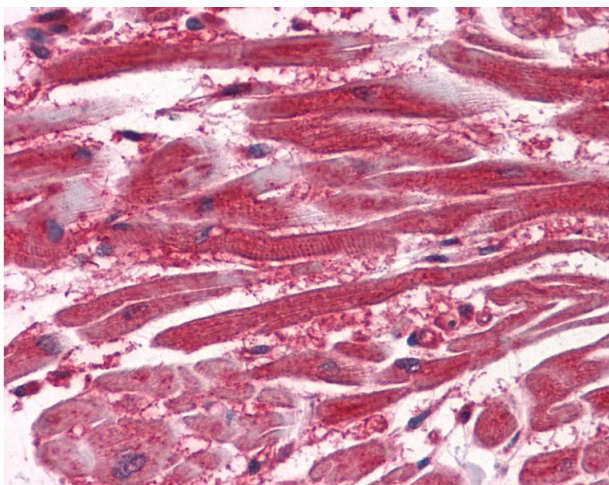
Immunohistochemistry

Image 1. Anti-VEGFR-1 antibody IHC staining of human heart. Immunohistochemistry of formalin-fixed, paraffin-embedded tissue after heat-induced antigen retrieval. Antibody ABIN956632 concentration 10 ug/ml.



Immunohistochemistry

Image 2. Anti-VEGFR-1 antibody IHC staining of human placenta. Immunohistochemistry of formalin-fixed, paraffin-embedded tissue after heat-induced antigen retrieval. Antibody ABIN956632 concentration 10 ug/ml.



Immunohistochemistry

Image 3. Anti-VEGFR-1 antibody IHC of human heart. Immunohistochemistry of formalin-fixed, paraffin-embedded tissue after heat-induced antigen retrieval. Antibody concentration 10 ug/ml.