

Datasheet for ABIN956761
anti-GRIA2 antibody (pSer880)



[Go to Product page](#)

1 Image

Overview

Quantity:	100 µL
Target:	GRIA2
Binding Specificity:	pSer880
Reactivity:	Human, Rat, Mouse, Zebrafish (Danio rerio), Chicken, Primate
Host:	Rabbit
Clonality:	Polyclonal
Conjugate:	This GRIA2 antibody is un-conjugated
Application:	Western Blotting (WB)

Product Details

Immunogen:	Phosphopeptide corresponding to amino acid residues surrounding the phospho-Ser880 of rat GluR2 Type of Immunogen: Synthetic phospho-peptide
Specificity:	Specific for the ~100k GluR2 protein phosphorylated at Ser880.
Purification:	Affinity purified

Target Details

Target:	GRIA2
Alternative Name:	GRIA2 / GLUR2 (GRIA2 Products)
Background:	Name/Gene ID: GRIA2

Target Details

Subfamily: Glutamate receptor - ionotropic (NMDA receptor)

Family: Ion Channel

Synonyms: GRIA2, AMPA 2, GluR-K2, Glutamate receptor 2, HBGR2, GluA2, GluR-2, GluR-B, GLUR2, GLURB

Gene ID: 2891

UniProt: [P42262](#)

Pathways: [PI3K-Akt Signaling](#)

Application Details

Application Notes: Approved: WB (1:1000)

Comment: Target Species of Antibody: Rat

Restrictions: For Research Use only

Handling

Format: Liquid

Concentration: Lot specific

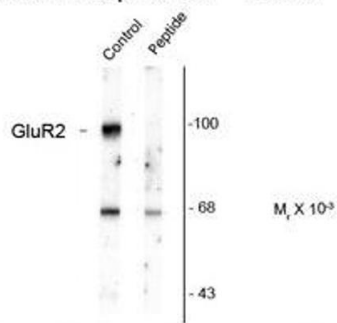
Buffer: 10 mM HEPES (pH 7.5), 150 mM NaCl, 100 µg per ml BSA and 50 % glycerol.

Handling Advice: Avoid repeated freeze thaw cycles.

Storage: -20 °C

Storage Comment: Store at -20°C, stable for 1 year. Avoid freeze-thaw cycles.

Anti-Phospho-Ser⁸⁸⁰ GluR2



Western blot of rat brain homogenate showing specific immunolabeling of the ~100k GluR2 protein phosphorylated at Ser⁸⁸⁰ (control). Immunolabeling is blocked by preadsorption with the phospho-peptide used as antigen (Peptide) but not by the corresponding dephospho-peptide (not shown).

Image 1.