

Datasheet for ABIN956764  
**anti-GRIN2C antibody (pSer1244)**[Go to Product page](#)

## 1 Image

## Overview

Quantity:	100 µL
Target:	GRIN2C
Binding Specificity:	pSer1244
Reactivity:	Human, Mouse, Rat, Cow, Dog, Primate
Host:	Rabbit
Clonality:	Polyclonal
Conjugate:	This GRIN2C antibody is un-conjugated
Application:	Western Blotting (WB)

## Product Details

Immunogen:	Synthetic phospho-peptide surrounding the phospho Ser1244 of the NR2C-subunit of rat NMDA receptor  Type of Immunogen: Synthetic phospho-peptide
Specificity:	Specific for the ~140k NR2C subunit of the NMDA receptor phosphorylated at Ser1244. Immunolabeling is blocked by preadsorption of antibody with the phospho-peptide that was used to generate the antibody but not by the corresponding dephospho-peptide.
Purification:	Affinity purified

## Target Details

Target:	GRIN2C
---------	--------

## Target Details

Alternative Name:	GRIN2C / NMDAR2C / NR2C ( <a href="#">GRIN2C Products</a> )
Background:	Name/Gene ID: GRIN2C Subfamily: Glutamate receptor - ionotropic (NMDA receptor) Family: Ion Channel  Synonyms: GRIN2C, GluN2C, NMDA receptor 2C, NMDAR2C, NR2C, GluR epsilon 3
Gene ID:	2905
UniProt:	<a href="#">Q14957</a>
Pathways:	<a href="#">Synaptic Membrane</a>

## Application Details

Application Notes:	Approved: WB (1:1000)
Comment:	Target Species of Antibody: Rat
Restrictions:	For Research Use only

## Handling

Format:	Liquid
Concentration:	Lot specific
Buffer:	10 mM HEPES ( pH 7.5), 150 mM NaCl, 100 µg per ml BSA and 50 % glycerol.
Handling Advice:	Avoid repeated freeze thaw cycles.
Storage:	-20 °C
Storage Comment:	Store at -20°C, stable for 1 year. Avoid freeze-thaw cycles.

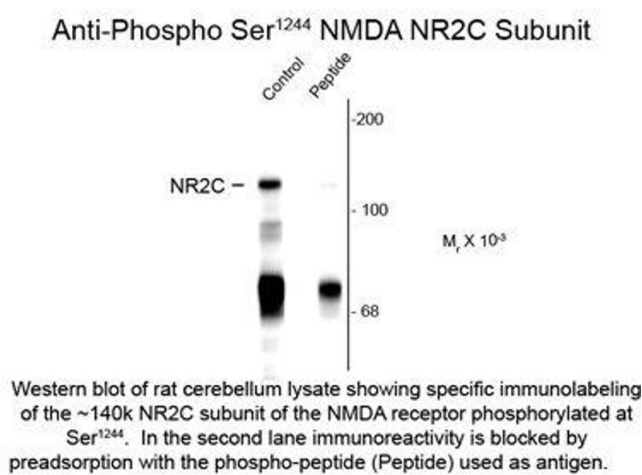


Image 1.