

Datasheet for ABIN956768

anti-Tryptophan Hydroxylase 1 antibody (pSer260)



[Go to Product page](#)

1 Image

Overview

Quantity:	100 µL
Target:	Tryptophan Hydroxylase 1 (TPH1)
Binding Specificity:	pSer260
Reactivity:	Human, Mouse, Rat, Cow, Chicken, Dog, Zebrafish (Danio rerio)
Host:	Rabbit
Clonality:	Polyclonal
Conjugate:	This Tryptophan Hydroxylase 1 antibody is un-conjugated
Application:	Western Blotting (WB)

Product Details

Immunogen:	Phosphopeptide corresponding to amino acid residues surrounding the phospho-Ser260 of rat tryptophan hydroxylase (TPH)
Specificity:	Specific for the ~55k tryptophan hydroxylase protein phosphorylated at Ser260.
Purification:	Affinity purified

Target Details

Target:	Tryptophan Hydroxylase 1 (TPH1)
Alternative Name:	Tryptophan Hydroxylase (TPH) (TPH1 Products)
Background:	Name/Gene ID: TPH
	Synonyms: TPH

Target Details

Pathways:

Feeding Behaviour

Application Details

Application Notes:

Approved: WB (1:1000)

Comment:

Target Species of Antibody: Rat

Restrictions:

For Research Use only

Handling

Format:

Liquid

Concentration:

Lot specific

Buffer:

10 mM HEPES (pH 7.5), 150 mM NaCl, 100 µg per ml BSA and 50 % glycerol.

Handling Advice:

Avoid repeated freeze thaw cycles.

Storage:

-20 °C

Storage Comment:

Store at -20°C, stable for 1 year. Avoid freeze-thaw cycles.

Images

Anti-Phospho-Ser²⁶⁰ Tryptophan Hydroxylase

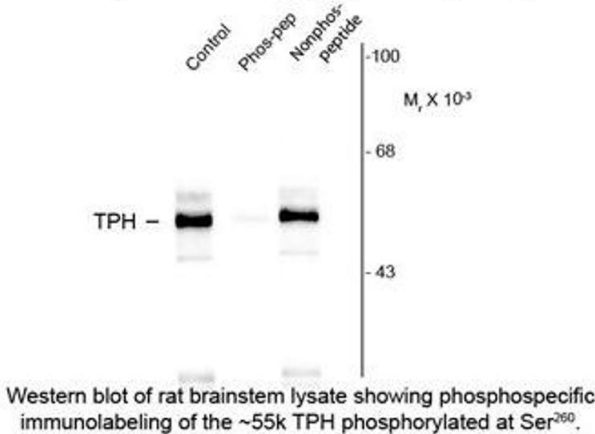


Image 1.