

Datasheet for ABIN957791
anti-Haptoglobin antibody



[Go to Product page](#)

2 Images

Overview

Quantity:	50 µL
Target:	Haptoglobin (HP)
Reactivity:	Human
Host:	Mouse
Clonality:	Monoclonal
Conjugate:	This Haptoglobin antibody is un-conjugated
Application:	Western Blotting (WB), Immunohistochemistry (IHC), ELISA, Immunohistochemistry (Paraffin-embedded Sections) (IHC (p))

Product Details

Brand:	IHC-plus™
Immunogen:	Protein purified from Human plasma.
Clone:	26E11
Isotype:	IgG1 kappa
Purification:	Ammonium sulfate precipitation

Target Details

Target:	Haptoglobin (HP)
Alternative Name:	HP / Haptoglobin (HP Products)
Background:	Name/Gene ID: HP

Target Details

Synonyms: HP, Binding peptide, Haptoglobin alpha(1S)-beta, Haptoglobin, beta polypeptide, Haptoglobin, Haptoglobin alpha(2FS)-beta, Haptoglobin, alpha polypeptide, HP2ALPHA2, BP, Zonulin, HPA1S

Gene ID: 3240

UniProt: [P00738](#)

Pathways: [Transition Metal Ion Homeostasis](#)

Application Details

Application Notes: Approved: ELISA, IHC, IHC-P (1:200), WB (1:500)

Comment: Target Species of Antibody: Human

Restrictions: For Research Use only

Handling

Format: Liquid

Concentration: Lot specific

Buffer: HEPES with 0.15M NaCl, 0.01 % BSA, 0.03 % sodium azide, and 50 % glycerol. Sourced in Ascites.

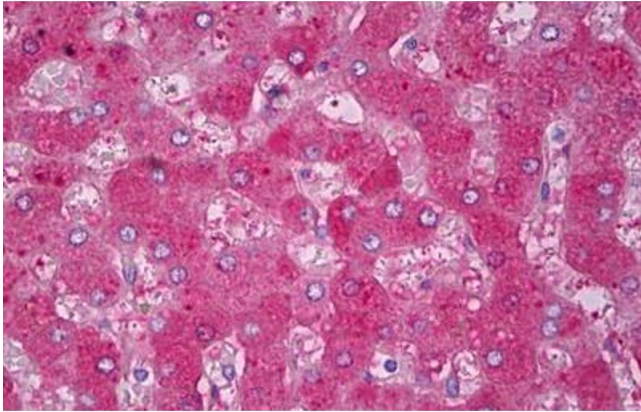
Preservative: Sodium azide

Precaution of Use: This product contains Sodium azide: a POISONOUS AND HAZARDOUS SUBSTANCE which should be handled by trained staff only.

Handling Advice: avoid freeze thaw cycles.

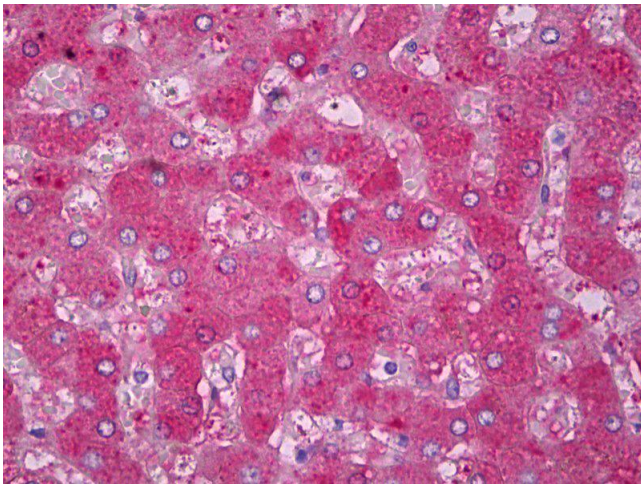
Storage: 4 °C, -20 °C

Storage Comment: Short term 4°C, long term aliquot and store at -20°C, avoid freeze-thaw cycles.



Immunohistochemistry

Image 1. Anti-Haptoglobin antibody IHC staining of human liver. Immunohistochemistry of formalin-fixed, paraffin-embedded tissue after heat-induced antigen retrieval. Antibody ABIN957791 dilution 1:200.



Immunohistochemistry

Image 2. Anti-Haptoglobin antibody IHC of human liver. Immunohistochemistry of formalin-fixed, paraffin-embedded tissue after heat-induced antigen retrieval. Antibody dilution 1:200.