



[Go to Product page](#)

Datasheet for ABIN957838

anti-C4BP antibody

2 Images

Overview

Quantity:	1 mL
Target:	C4BP
Reactivity:	Human
Host:	Sheep
Clonality:	Polyclonal
Conjugate:	This C4BP antibody is un-conjugated
Application:	Immunodiffusion (ID), Immunohistochemistry (Paraffin-embedded Sections) (IHC (p))

Product Details

Immunogen:	Human C4 binding protein Type of Immunogen: Purified protein
Specificity:	Human C4 Binding Protein. The reactivity of the antiserum is restricted to C4 binding protein. In immunoelectrophoresis and radial immunodiffusion, using various antiserum concentrations against human plasma a single precipitin line is obtained and shows a reaction of full identity with the purified immunogen. Cross-reactivity The antiserum does not cross-react with any other human plasma proteins as tested in gel- diffusion techniques. Inter-species cross-reactivity is a normal feature of antibodies to plasma proteins, since homologous proteins of different species frequently share antigenic determinants. Cross-reactivity of this antiserum has not been tested in detail.
Purification:	Immunoaffinity absorbed

Target Details

Target:	C4BP
Alternative Name:	C4BP / C4b-Binding Protein (C4BP Products)

Application Details

Application Notes: Approved: ID, IHC-P (1:200)

Usage: This product is intended for use in precipitating techniques as immunoelectrophoresis and single and double radial immunodiffusion (Mancini, Ouchterlony) to identify the presence of C4 binding protein or to determine its concentration. The presence of non-precipitating antibodies has not been assayed. This does not exclude the use of the antiserum in non-precipitating antibody-binding techniques if proper controls are included.

Restrictions: For Research Use only

Handling

Format:	Lyophilized
Reconstitution:	Sterile distilled water 1 ml
Concentration:	Lot specific
Buffer:	Lyophilized antiserum
Handling Advice:	Avoid repeat freeze-thaw cycles.
Storage:	4 °C,-20 °C
Storage Comment:	Long term: -20°C Short term: +4°C. Avoid repeat freeze-thaw cycles.

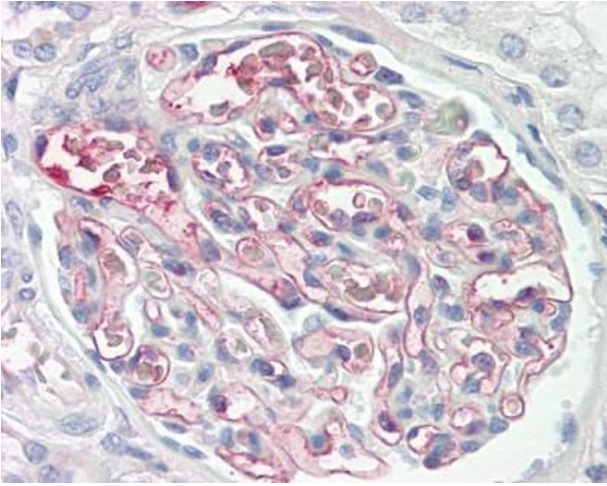
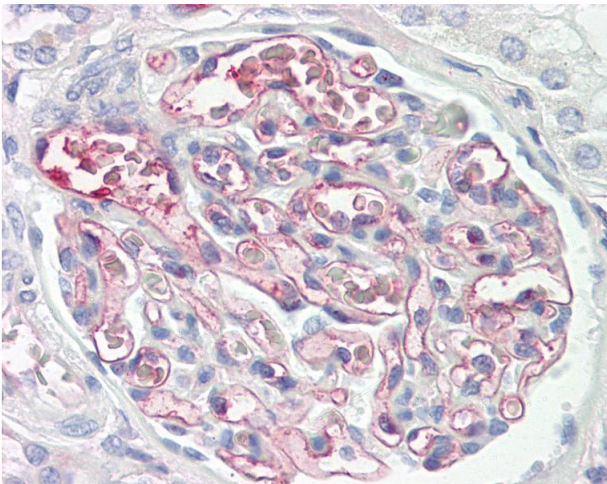


Image 1.



Immunohistochemistry

Image 2. Human Kidney: Formalin-Fixed, Paraffin-Embedded (FFPE)