

Datasheet for ABIN958310  
**anti-Klotho antibody (AA 251-300)**[Go to Product page](#)

## 2 Images

## Overview

Quantity:	50 µg
Target:	Klotho (KL)
Binding Specificity:	AA 251-300
Reactivity:	Human, Mouse, Rat, Rabbit, Horse, Dog, Guinea Pig, Bat, Monkey
Host:	Rabbit
Clonality:	Polyclonal
Conjugate:	This Klotho antibody is un-conjugated
Application:	Western Blotting (WB), Immunohistochemistry (IHC), Immunohistochemistry (Paraffin-embedded Sections) (IHC (p))

## Product Details

Brand:	IHC-plus™
Immunogen:	Synthetic peptide located between aa251-300 of human KL (Q9UEF7-2). Percent identity by BLAST analysis: Human, Chimpanzee, Gorilla, Monkey, Galago, Marmoset, Mouse, Rat, Elephant, Dog, Bat, Rabbit, Horse, Guinea pig, Platypus (100%), Gibbon, Bovine, Pig, Opossum (92%).  Type of Immunogen: Synthetic peptide
Isotype:	IgG
Specificity:	Human KL / Klotho
Predicted Reactivity:	Percent identity by BLAST analysis: Human, Mouse, Rat, Dog, Rabbit, Guinea pig (100%) Bovine,

## Product Details

Pig (92%).

Purification: Immunoaffinity purified

## Target Details

Target: Klotho (KL)

Alternative Name: KL / Klotho ([KL Products](#))

Background: Name/Gene ID: KL

Synonyms: KL, Klotho

Gene ID: 9365

UniProt: [Q9UEF7](#)

Pathways: [Fc-epsilon Receptor Signaling Pathway](#), [EGFR Signaling Pathway](#), [Neurotrophin Signaling Pathway](#), [Hormone Activity](#), [Growth Factor Binding](#)

## Application Details

Application Notes: Approved: IHC, IHC-P (5 µg/mL), WB (0.2 - 1 µg/mL)

Usage: Western Blot: Suggested dilution at 1 µg/mL in 5 % skim milk / PBS buffer, and HRP conjugated anti-Rabbit IgG should be diluted in 1: 50,000 - 100,000 as second antibody. ELISA titer in peptide based assay: 1:62500.

Comment: Target Species of Antibody: Human

Restrictions: For Research Use only

## Handling

Format: Lyophilized

Reconstitution: Distilled water

Concentration: Lot specific

Buffer: Lyophilized from PBS with 2 % sucrose

Handling Advice: Avoid repeat freeze-thaw cycles.

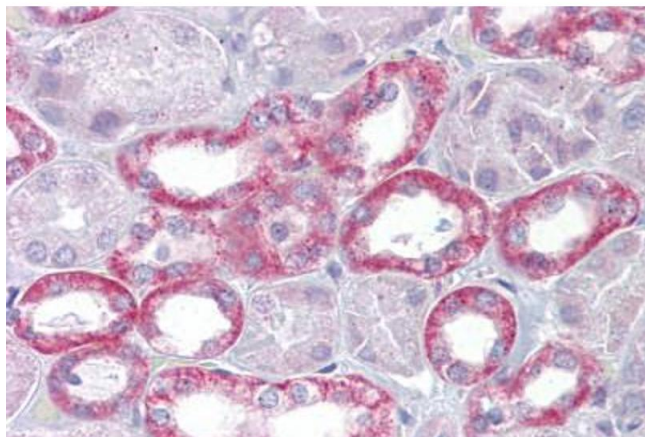
Storage: 4 °C,-20 °C

## Handling

Storage Comment: Long term: -20°C, the use of 50% glycerol is recommended if storing aliquots in -20°C for long term use (up to 1 year)

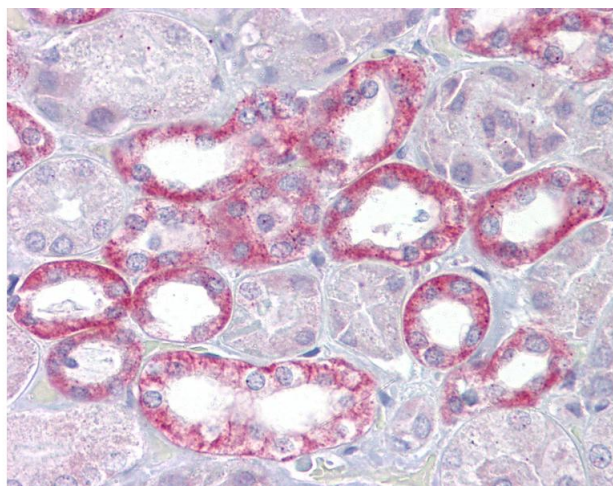
Short term (less than 1 week): 4°C. Avoid freeze-thaw cycles.

## Images



### Immunohistochemistry

**Image 1.** Anti-Klotho antibody IHC staining of human kidney. Immunohistochemistry of formalin-fixed, paraffin-embedded tissue after heat-induced antigen retrieval. Antibody ABIN958310 concentration 5 ug/ml.



### Immunohistochemistry

**Image 2.** Anti-Klotho antibody IHC of human kidney. Immunohistochemistry of formalin-fixed, paraffin-embedded tissue after heat-induced antigen retrieval. Antibody concentration 5 ug/ml. This image was taken for the unconjugated form of this product. Other fo ...