

Datasheet for ABIN958328  
**anti-TRPC4 antibody (C-Term)**[Go to Product page](#)

## 2 Images

## Overview

Quantity:	50 µg
Target:	TRPC4
Binding Specificity:	C-Term
Reactivity:	Human, Mouse, Cow, Pig
Host:	Rabbit
Clonality:	Polyclonal
Conjugate:	This TRPC4 antibody is un-conjugated
Application:	Western Blotting (WB), Immunohistochemistry (IHC), Immunohistochemistry (Paraffin-embedded Sections) (IHC (p))

## Product Details

Brand:	IHC-plus™
Immunogen:	Synthetic peptide from C-Terminus of human TRPC4 (Q9UBN4, NP_057263). Percent identity by BLAST analysis: Human, Chimpanzee, Gorilla, Orangutan, Mouse (100%), Gibbon, Dog (92%), Rat (91%), Marmoset, Bovine (85%), Elephant, Pig (84%).  Type of Immunogen: Synthetic peptide
Isotype:	IgG
Specificity:	Human TRPC4
Predicted Reactivity:	Percent identity by BLAST analysis: Human, Mouse (100%) Dog (92%) Rat (91%) Marmoset, Bovine (85%) Pig (84%).

## Product Details

Purification: Immunoaffinity purified

## Target Details

Target: TRPC4

Alternative Name: TRPC4 ([TRPC4 Products](#))

Background: Name/Gene ID: TRPC4  
Subfamily: Calcium channel - TRP  
Family: Ion Channel  
  
Synonyms: TRPC4, CCE1, HTRP-4, HTRP4, TRP4, STRPC4, Trrp4, Trp-related protein 4

Gene ID: 7223

NCBI Accession: [NP\\_057263](#)

UniProt: [Q9UBN4](#)

## Application Details

Application Notes: Approved: IHC, IHC-P (5 µg/mL), WB (0.2 - 1 µg/mL)  
  
Usage: Western Blot: Suggested dilution at 1 µg/mL in 5 % skim milk / PBS buffer, and HRP conjugated anti-Rabbit IgG should be diluted in 1: 50,000 - 100,000 as second antibody. ELISA titer in peptide based assay: 1:312500.

Comment: Target Species of Antibody: Human

Restrictions: For Research Use only

## Handling

Format: Lyophilized

Reconstitution: Distilled water

Concentration: Lot specific

Buffer: Lyophilized from PBS with 2 % sucrose

Handling Advice: Avoid repeat freeze-thaw cycles.

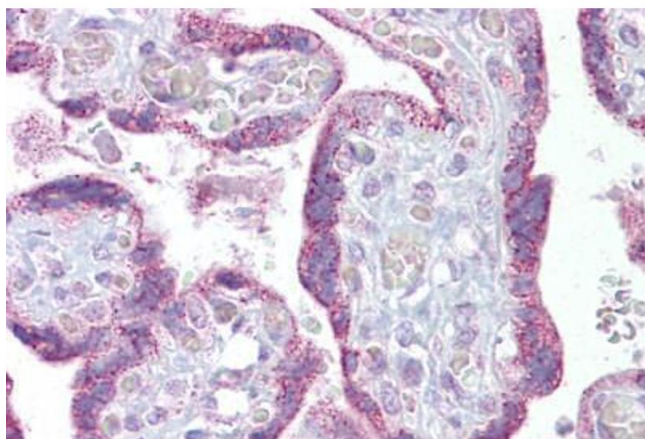
Storage: 4 °C, -20 °C

## Handling

Storage Comment: Long term: -20°C, the use of 50% glycerol is recommended if storing aliquots in -20°C for long term use (up to 1 year)

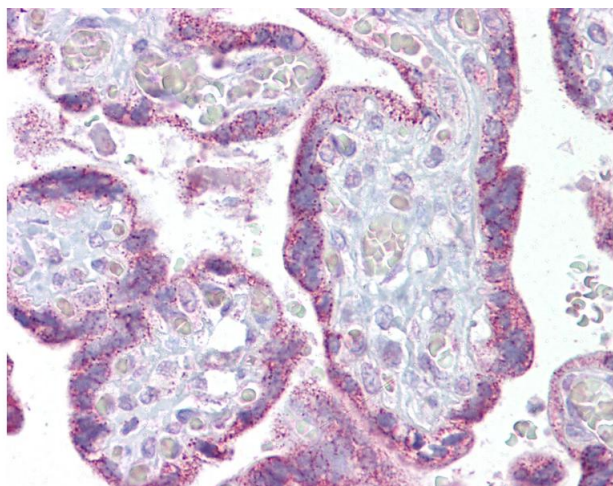
Short term (less than 1 week): 4°C. Avoid freeze-thaw cycles.

## Images



### Immunohistochemistry

**Image 1.** Anti-TRPC4 antibody IHC staining of human placenta. Immunohistochemistry of formalin-fixed, paraffin-embedded tissue after heat-induced antigen retrieval. Antibody ABIN958328 concentration 5 ug/ml.



### Immunohistochemistry

**Image 2.** Anti-TRPC4 antibody IHC of human placenta. Immunohistochemistry of formalin-fixed, paraffin-embedded tissue after heat-induced antigen retrieval. Antibody concentration 5 ug/ml. This image was taken for the unconjugated form of this product. Other f ...