



[Go to Product page](#)

Datasheet for ABIN958965
anti-CRY1 antibody (AA 151-200)

1 Image

Overview

Quantity:	50 µg
Target:	CRY1
Binding Specificity:	AA 151-200
Reactivity:	Human, Mouse, Rat, Cow, Dog, Guinea Pig, Horse, Sheep, Bat, Monkey, Pig
Host:	Rabbit
Clonality:	Polyclonal
Conjugate:	This CRY1 antibody is un-conjugated
Application:	Western Blotting (WB), Immunohistochemistry (IHC), Immunohistochemistry (Paraffin-embedded Sections) (IHC (p))

Product Details

Brand:	IHC-plus™
Immunogen:	Synthetic peptide located between aa151-200 of human CRY1 (Q16526, NP_004066). Percent identity by BLAST analysis: Human, Chimpanzee, Gorilla, Gibbon, Monkey, Marmoset, Mouse, Rat, Sheep, Elephant, Panda, Dog, Bovine, Bat, Horse, Pig, Guinea pig, Platypus (100%), Galago, Rabbit, Opossum, Chicken, Lizard, Xenopus, Zebrafish, Beetle (92%). Type of Immunogen: Synthetic peptide
Specificity:	Human CRY1
Predicted Reactivity:	Percent identity by BLAST analysis: Human, Mouse, Rat, Sheep, Dog, Bovine, Horse, Pig, Guinea pig (100%) Chicken, Xenopus, Zebrafish (92%).

Product Details

Purification: Immunoaffinity purified

Target Details

Target: CRY1

Alternative Name: CRY1 ([CRY1 Products](#))

Background: Name/Gene ID: CRY1

Synonyms: CRY1, Cryptochrome 1, Cryptochrome-1, Photolyase homolog 1, PHLL1

Gene ID: 1407

NCBI Accession: [NP_004066](#)

UniProt: [Q16526](#)

Pathways: [Response to Water Deprivation](#), [Proton Transport](#)

Application Details

Application Notes: Approved: IHC, IHC-P (5 µg/mL), WB (1 µg/mL)

Usage: Western Blot: Suggested dilution at 1 µg/mL in 5 % skim milk / PBS buffer, and HRP conjugated anti-Rabbit IgG should be diluted in 1: 50,000 - 100,000 as secondary antibody.

Comment: Target Species of Antibody: Human

Restrictions: For Research Use only

Handling

Format: Lyophilized

Reconstitution: Distilled water

Concentration: Lot specific

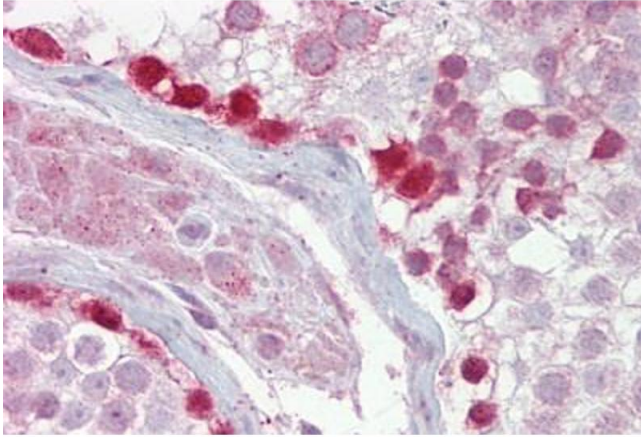
Buffer: Lyophilized from PBS with 2 % sucrose

Handling Advice: Avoid repeat freeze-thaw cycles.

Storage: 4 °C, -20 °C

Storage Comment: Long term: -20°C, the use of 50% glycerol is recommended if storing aliquots in -20°C for long term use (up to 1 year)

Short term (less than 1 week): 4°C. Avoid freeze-thaw cycles.



Immunohistochemistry

Image 1. Anti-CRY1 antibody IHC staining of human testis. Immunohistochemistry of formalin-fixed, paraffin-embedded tissue after heat-induced antigen retrieval. Antibody ABIN958965 concentration 5 ug/ml.