

Datasheet for ABIN958983

anti-FGG antibody (AA 216-265)



[Go to Product page](#)

1 Image

Overview

Quantity:	50 µg
Target:	FGG
Binding Specificity:	AA 216-265
Reactivity:	Human, Mouse, Rat, Chicken, Cow, Dog, Rabbit, Guinea Pig, Monkey, Horse, Pig
Host:	Rabbit
Clonality:	Polyclonal
Conjugate:	This FGG antibody is un-conjugated
Application:	Western Blotting (WB), Immunohistochemistry (IHC), Immunohistochemistry (Paraffin-embedded Sections) (IHC (p))

Product Details

Brand:	IHC-plus™
Immunogen:	Synthetic peptide located between aa216-265 of human FGG (P02679, NP_000500). Percent identity by BLAST analysis: Human, Chimpanzee, Gorilla, Gibbon, Monkey, Galago, Marmoset, Mouse, Rat, Elephant, Dog, Bovine, Rabbit, Horse, Pig, Guinea pig, Turkey, Zebra finch, Chicken, Platypus, Lizard (100%), Bat, Opossum (92%), Xenopus, Zebrafish (90%). Type of Immunogen: Synthetic peptide
Specificity:	Human FGG
Predicted Reactivity:	Percent identity by BLAST analysis: Human, Mouse, Dog, Bovine, Rabbit, Horse, Pig, Chicken (100%) Zebrafish (90%).

Product Details

Purification: Immunoaffinity purified

Target Details

Target: FGG

Alternative Name: FGG / Fibrinogen gamma ([FGG Products](#))

Background: Name/Gene ID: FGG

Synonyms: FGG, Fibrinogen gamma-b chain, Fibrinogen gamma chain, Fibrinogen, gamma polypeptide

Gene ID: 2266

NCBI Accession: [NP_000500](#)

UniProt: [P02679](#)

Application Details

Application Notes: Approved: IHC, IHC-P (5 µg/mL), WB (0.2 - 1 µg/mL)

Usage: Western Blot: Suggested dilution at 1 µg/mL in 5 % skim milk / PBS buffer, and HRP conjugated anti-Rabbit IgG should be diluted in 1: 50,000 - 100,000 as secondary antibody.

Comment: Target Species of Antibody: Human

Restrictions: For Research Use only

Handling

Format: Lyophilized

Reconstitution: Distilled water

Concentration: Lot specific

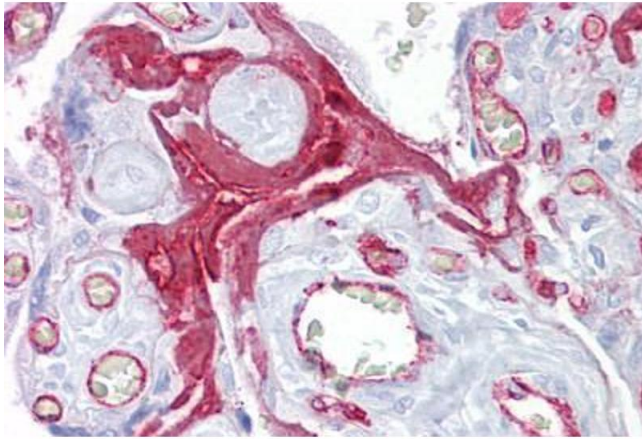
Buffer: Lyophilized from PBS with 2 % sucrose

Handling Advice: Avoid repeat freeze-thaw cycles.

Storage: 4 °C, -20 °C

Storage Comment: Long term: -20°C, the use of 50% glycerol is recommended if storing aliquots in -20°C for long term use (up to 1 year)

Short term (less than 1 week): 4°C. Avoid freeze-thaw cycles.



Immunohistochemistry

Image 1. Anti-FGG / Fibrinogen Gamma Chain antibody IHC staining of human placenta. Immunohistochemistry of formalin-fixed, paraffin-embedded tissue after heat-induced antigen retrieval. Antibody ABIN958983 concentration 5 ug/ml.