

Datasheet for ABIN958998

## anti-LGALS1/Galectin 1 antibody (AA 72-121)



[Go to Product page](#)

### 2 Images

#### Overview

Quantity:	50 µg
Target:	LGALS1/Galectin 1 (LGALS1)
Binding Specificity:	AA 72-121
Reactivity:	Human, Rat, Cow, Sheep, Monkey, Guinea Pig
Host:	Rabbit
Clonality:	Polyclonal
Conjugate:	This LGALS1/Galectin 1 antibody is un-conjugated
Application:	Western Blotting (WB), Immunohistochemistry (IHC), Immunohistochemistry (Paraffin-embedded Sections) (IHC (p))

#### Product Details

Brand:	IHC-plus™
Immunogen:	Synthetic peptide located between aa72-121 of human LGALS1 (P09382, NP_002296). Percent identity by BLAST analysis: Human, Chimpanzee, Gorilla, Orangutan, Baboon, Monkey, Marmoset, Sheep, Bovine (100%), Panda, Dog, Bat, Horse, Pig (92%), Platypus (90%), Mouse, Rat, Hamster, Elephant, Rabbit, Opossum, Guinea pig (85%), Zebra finch (81%).  Type of Immunogen: Synthetic peptide
Specificity:	Human LGALS1 / Galectin 1
Predicted Reactivity:	Percent identity by BLAST analysis: Human, Bovine (100%) Dog, Pig (92%) Rat, Guinea pig (85%).

## Product Details

Purification: Immunoaffinity purified

## Target Details

Target: LGALS1/Galectin 1 (LGALS1)

Alternative Name: LGALS1 / Galectin 1 ([LGALS1 Products](#))

Background: Name/Gene ID: LGALS1

Synonyms: LGALS1, 14 kDa lectin, 14 kDa laminin-binding protein, 14 kd lectin, GAL1, Galectin 1, Galectin-1, HBL, Lactose-binding lectin 1, Galaptin, GBP, HLBP14, HPL, S-Lac lectin 1, Gal-1

Gene ID: 3956

NCBI Accession: [NP\\_002296](#)

UniProt: [P09382](#)

Pathways: [Carbohydrate Homeostasis](#)

## Application Details

Application Notes: Approved: IHC, IHC-P (5 µg/mL), WB (0.2 - 1 µg/mL)

Usage: Western Blot: Suggested dilution at 1 µg/mL in 5 % skim milk / PBS buffer, and HRP conjugated anti-Rabbit IgG should be diluted in 1: 50,000 - 100,000 as secondary antibody.

Comment: Target Species of Antibody: Human

Restrictions: For Research Use only

## Handling

Format: Lyophilized

Reconstitution: Distilled water

Concentration: Lot specific

Buffer: Lyophilized from PBS with 2 % sucrose

Handling Advice: Avoid repeat freeze-thaw cycles.

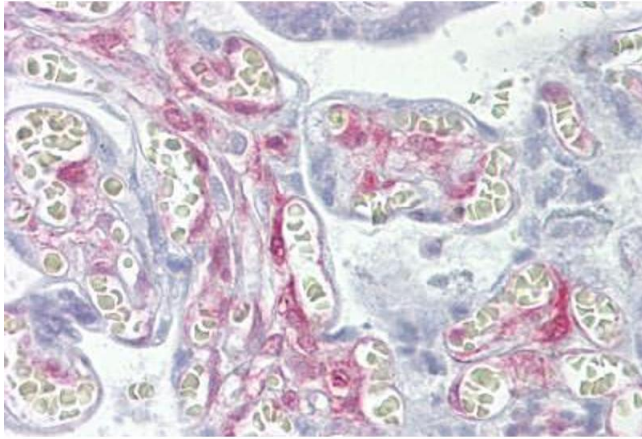
Storage: 4 °C, -20 °C

Storage Comment: Long term: -20°C, the use of 50% glycerol is recommended if storing aliquots in -20°C for long

term use (up to 1 year)

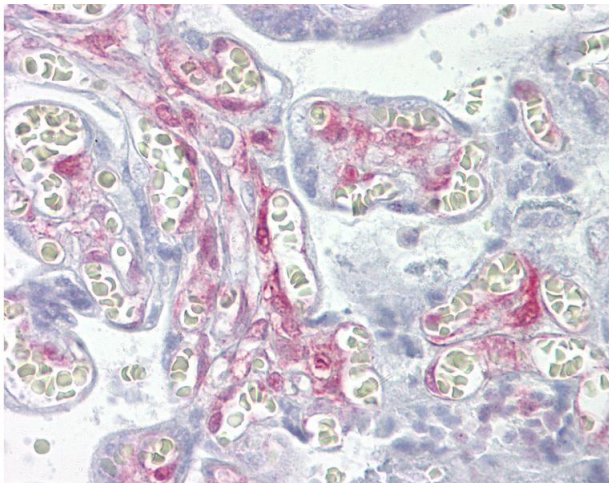
Short term (less than 1 week): 4°C. Avoid freeze-thaw cycles.

## Images



### Immunohistochemistry

**Image 1.** Anti-LGALS1 / Galectin 1 antibody IHC staining of human placenta. Immunohistochemistry of formalin-fixed, paraffin-embedded tissue after heat-induced antigen retrieval. Antibody ABIN958998 concentration 5 ug/ml.



### Immunohistochemistry

**Image 2.** Anti-LGALS1 / Galectin 1 antibody IHC of human placenta. Immunohistochemistry of formalin-fixed, paraffin-embedded tissue after heat-induced antigen retrieval. Antibody concentration 5 ug/ml. This image was taken for the unconjugated form of this pr ...