

Datasheet for ABIN959006
anti-P2RX2 antibody (AA 108-157)

2 Images

[Go to Product page](#)

Overview

Quantity:	50 µg
Target:	P2RX2
Binding Specificity:	AA 108-157
Reactivity:	Human, Rabbit, Guinea Pig, Monkey
Host:	Rabbit
Clonality:	Polyclonal
Conjugate:	This P2RX2 antibody is un-conjugated
Application:	Western Blotting (WB), Immunohistochemistry (IHC), Immunohistochemistry (Paraffin-embedded Sections) (IHC (p))

Product Details

Brand:	IHC-plus™
Immunogen:	Synthetic peptide located between aa108-157 of human P2RX2 (Q9UBL9-6, NP_036358). Percent identity by BLAST analysis: Human, Chimpanzee, Gorilla, Gibbon, Monkey, Marmoset (100%), Galago (85%), Guinea pig (83%). Type of Immunogen: Synthetic peptide
Specificity:	Human P2RX2 / P2X2
Predicted Reactivity:	Percent identity by BLAST analysis: Human (100%) Guinea pig (83%).
Purification:	Immunoaffinity purified

Target Details

Target:	P2RX2
Alternative Name:	P2RX2 / P2X2 (P2RX2 Products)
Background:	Name/Gene ID: P2RX2 Subfamily: P2X receptor Family: Ion Channel Synonyms: P2RX2, ATP receptor, p2X2, p2X Receptor, subunit 2, Purinergic receptor, p2RX2, p2X receptor 2, p2X purinoceptor 2, p2X2 purinoceptor
Gene ID:	22953
NCBI Accession:	NP_036358
UniProt:	Q9UBL9
Pathways:	Skeletal Muscle Fiber Development , Positive Regulation of Endopeptidase Activity

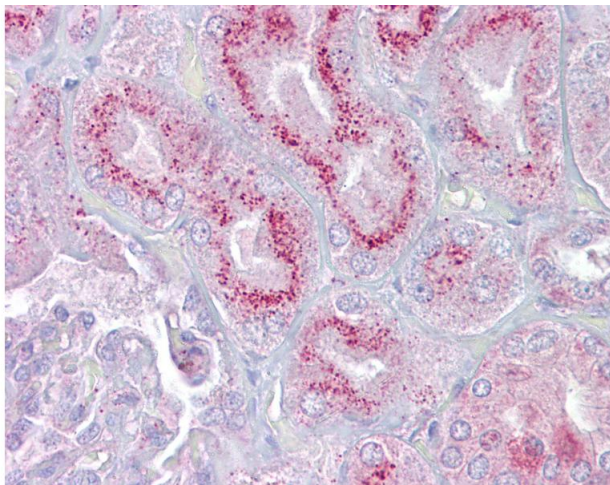
Application Details

Application Notes:	Approved: IHC, IHC-P (5 µg/mL), WB (0.2 - 1 µg/mL) Usage: Western Blot: Suggested dilution at 1 µg/mL in 5 % skim milk / PBS buffer, and HRP conjugated anti-Rabbit IgG should be diluted in 1: 50,000 - 100,000 as secondary antibody.
Comment:	Target Species of Antibody: Human
Restrictions:	For Research Use only

Handling

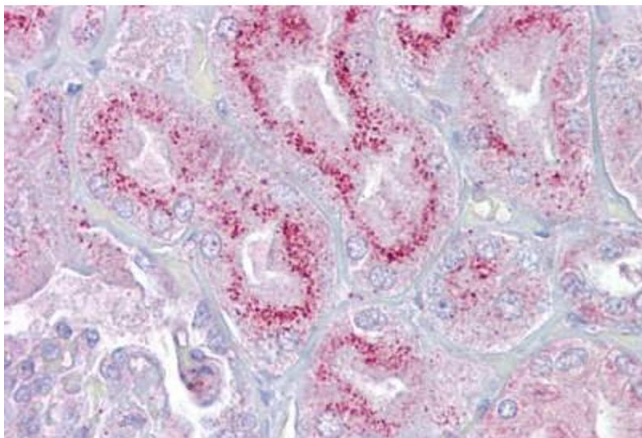
Format:	Lyophilized
Reconstitution:	Distilled water
Concentration:	Lot specific
Buffer:	Lyophilized from PBS with 2 % sucrose
Handling Advice:	Avoid repeat freeze-thaw cycles.
Storage:	4 °C, -20 °C
Storage Comment:	Long term: -20°C, the use of 50% glycerol is recommended if storing aliquots in -20°C for long term use (up to 1 year)

Short term (less than 1 week): 4°C. Avoid freeze-thaw cycles.



Immunohistochemistry

Image 1. Anti-P2RX2 / P2X2 antibody IHC of human kidney. Immunohistochemistry of formalin-fixed, paraffin-embedded tissue after heat-induced antigen retrieval. Antibody concentration 5 ug/ml. This image was taken for the unconjugated form of this product. Ot ...



Immunohistochemistry

Image 2. Anti-P2RX2 / P2X2 antibody IHC staining of human kidney. Immunohistochemistry of formalin-fixed, paraffin-embedded tissue after heat-induced antigen retrieval. Antibody ABIN959006 concentration 5 ug/ml.