

Datasheet for ABIN959033
anti-TFAM antibody (AA 151-200)[Go to Product page](#)

2 Images

Overview

Quantity:	50 µg
Target:	TFAM
Binding Specificity:	AA 151-200
Reactivity:	Human, Mouse
Host:	Rabbit
Clonality:	Polyclonal
Application:	Western Blotting (WB), Immunohistochemistry (IHC), Immunohistochemistry (Paraffin-embedded Sections) (IHC (p))

Product Details

Brand:	IHC-plus™
Immunogen:	Synthetic peptide located between aa151-200 of mouse Tfam (P40630, NP_033386). Percent identity by BLAST analysis: Mouse (100%). Type of Immunogen: Synthetic peptide
Specificity:	Human TFAM
Predicted Reactivity:	Percent identity by BLAST analysis: Mouse (100%).
Purification:	Immunoaffinity purified

Target Details

Target:	TFAM
---------	------

Target Details

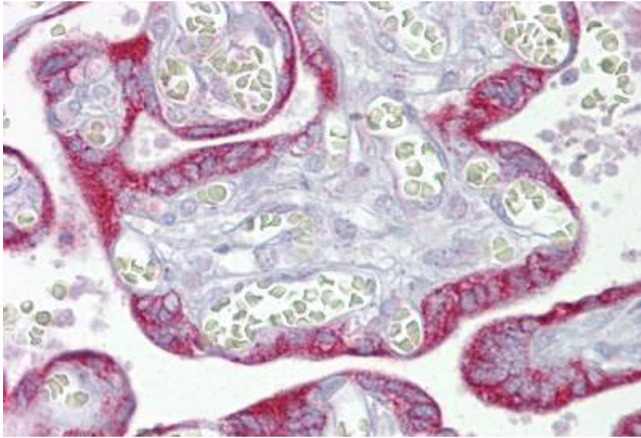
Alternative Name:	MtTFA / TFAM (TFAM Products)
Background:	Name/Gene ID: TFAM Family: Transcription factor Synonyms: TFAM, MTTF1, TCF-6, TCF6, TCF6L1, Transcription factor 6-like 2, Transcription factor 6-like 3, TCF6L2, TCF6L3, Transcription factor 6, Transcription factor 6-like 1, MTTFA
Gene ID:	7019
NCBI Accession:	NP_033386
UniProt:	Q00059
Pathways:	Chromatin Binding

Application Details

Application Notes:	Approved: IHC, IHC-P (5 µg/mL), WB (0.2 - 1 µg/mL) Usage: Western Blot: Suggested dilution at 1 µg/mL in 5 % skim milk / PBS buffer, and HRP conjugated anti-Rabbit IgG should be diluted in 1: 50,000 - 100,000 as secondary antibody.
Comment:	Target Species of Antibody: Mouse
Restrictions:	For Research Use only

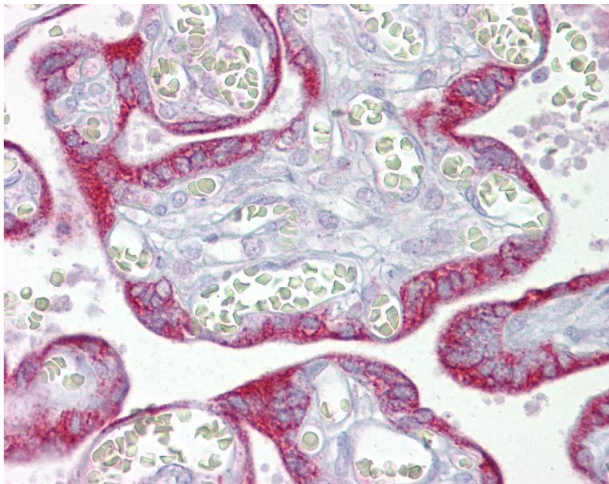
Handling

Format:	Lyophilized
Reconstitution:	Distilled water
Concentration:	Lot specific
Buffer:	Lyophilized from PBS with 2 % sucrose
Handling Advice:	Avoid repeat freeze-thaw cycles.
Storage:	4 °C, -20 °C
Storage Comment:	Long term: -20°C, the use of 50% glycerol is recommended if storing aliquots in -20°C for long term use (up to 1 year) Short term (less than 1 week): 4°C. Avoid freeze-thaw cycles.



Immunohistochemistry

Image 1. Anti-TFAM antibody IHC staining of human placenta. Immunohistochemistry of formalin-fixed, paraffin-embedded tissue after heat-induced antigen retrieval. Antibody ABIN959033 concentration 5 ug/ml.



Immunohistochemistry

Image 2. Anti-TFAM antibody IHC of human placenta. Immunohistochemistry of formalin-fixed, paraffin-embedded tissue after heat-induced antigen retrieval. Antibody concentration 5 ug/ml. This image was taken for the unconjugated form of this product. Other fo ...