

Datasheet for ABIN959036 anti-TRPM8 antibody (AA 251-300)



[Go to Product page](#)

2 Images

Overview

Quantity:	50 µg
Target:	TRPM8
Binding Specificity:	AA 251-300
Reactivity:	Human, Guinea Pig, Dog, Rabbit, Horse, Cow, Pig, Bat, Monkey
Host:	Rabbit
Clonality:	Polyclonal
Conjugate:	This TRPM8 antibody is un-conjugated
Application:	Western Blotting (WB), Immunohistochemistry (IHC), Immunohistochemistry (Paraffin-embedded Sections) (IHC (p))

Product Details

Brand:	IHC-plus™
Immunogen:	Synthetic peptide located between aa251-300 of human TRPM8 (Q7Z2W7, NP_076985). Percent identity by BLAST analysis: Human, Chimpanzee, Gorilla, Gibbon, Baboon, Monkey, Marmoset, Panda, Dog, Bovine, Bat, Rabbit, Horse, Pig, Armadillo (100%), Mouse, Rat, Elephant, Opossum, Platypus (92%), Galago, Guinea pig (85%). Type of Immunogen: Synthetic peptide
Specificity:	Human TRPM8
Predicted Reactivity:	Percent identity by BLAST analysis: Human, Dog, Bovine, Rabbit, Horse, Pig (100%) Mouse, Rat (92%) Guinea pig (85%).

Product Details

Purification: Immunoaffinity purified

Target Details

Target: TRPM8

Alternative Name: TRPM8 ([TRPM8 Products](#))

Background: Name/Gene ID: TRPM8
Subfamily: Calcium channel - TRP
Family: Ion Channel

Synonyms: TRPM8, CMR1, Cold-menthol receptor type 1, LTrpC-6, TRPP8, Trp-p8, LTRPC6

Gene ID: 79054

NCBI Accession: [NP_076985](#)

UniProt: [Q7Z2W7](#)

Application Details

Application Notes: Approved: IHC, IHC-P (5 µg/mL), WB (0.2 - 1 µg/mL)

Usage: Western Blot: Suggested dilution at 1 µg/mL in 5 % skim milk / PBS buffer, and HRP conjugated anti-Rabbit IgG should be diluted in 1: 50,000 - 100,000 as secondary antibody.

Comment: Target Species of Antibody: Human

Restrictions: For Research Use only

Handling

Format: Lyophilized

Reconstitution: Distilled water

Concentration: Lot specific

Buffer: Lyophilized from PBS with 2 % sucrose

Handling Advice: Avoid repeat freeze-thaw cycles.

Storage: 4 °C, -20 °C

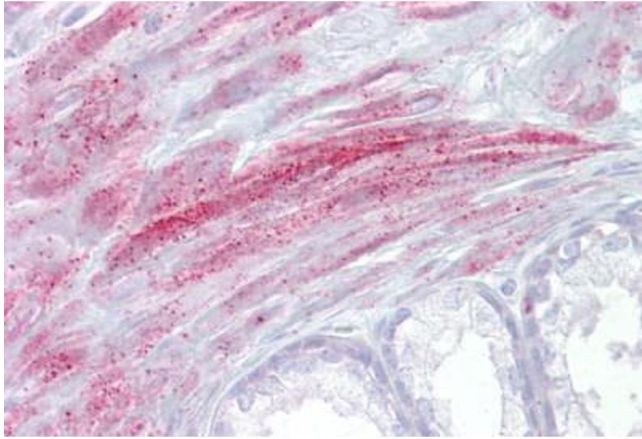
Storage Comment: Long term: -20°C, the use of 50% glycerol is recommended if storing aliquots in -20°C for long

Handling

term use (up to 1 year)

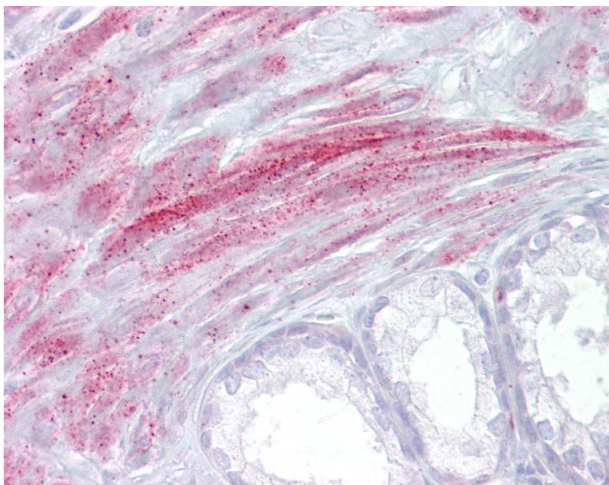
Short term (less than 1 week): 4°C. Avoid freeze-thaw cycles.

Images



Immunohistochemistry

Image 1. Anti-TRPM8 antibody IHC staining of human prostate. Immunohistochemistry of formalin-fixed, paraffin-embedded tissue after heat-induced antigen retrieval. Antibody ABIN959036 concentration 5 ug/ml.



Immunohistochemistry

Image 2. Anti-TRPM8 antibody IHC of human prostate. Immunohistochemistry of formalin-fixed, paraffin-embedded tissue after heat-induced antigen retrieval. Antibody concentration 5 ug/ml. This image was taken for the unconjugated form of this product. Other f ...